

TECHNICAL DATA SHEET

PE Anti-Mouse KLRG1 (2F1)

Catalog Number: 50-5893

PRODUCT INFORMATION

Contents: PE Anti-Mouse KLRG1 (2F1)

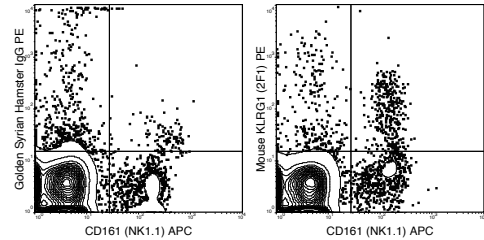
Isotype: Golden Syrian Hamster IgG

Concentration: 0.2 mg/mL

Clone: 2F1

Reactivity: Mouse

Formulation: 10 mM NaH₂PO₄, 150 mM NaCl, 0.09% NaN₃,
0.1% gelatin, pH7.2



C57Bl/6 splenocytes were stained with APC Anti-Mouse NK1.1 and 0.25 ug PE Anti-Mouse KLRG1 (50-5893) (right panel) or 0.25 ug PE Golden Syrian Hamster IgG (left panel).

DESCRIPTION

The 2F1 antibody reacts with mouse KLRG1 (Killer cell Lectin-like Receptor G1). This 30-38 kDa homodimeric receptor may be expressed by activated, mature NK cells and by effector/memory T cells, with potentially different roles in each cell type. KLRG1 can regulate, in an inhibitory fashion, the development and effector functions of NK cells, and is often cited as a senescence or terminal differentiation marker for T cells. Ligands for KLRG1 include members of the cadherin family of adhesion molecules, specifically N-Cadherin, E-Cadherin, and R-Cadherin. These interactions may induce bidirectional, immunosuppressive signaling in both KLRG- and Cadherin-expressing cells. A more recently identified role for KLRG1-Cadherin signaling in tissue organization, e.g. in cardiac angiogenesis, expands the function of these interactions beyond immunosuppression of immune cells. (Bouchentouf et al. 2010. J. Immunol. 185: 7014-7025). The 2F1 antibody may be used as a phenotypic marker for KLRG1 in mouse, frequently in combination with Anti-Mouse CD127 antibody (clone A7R34), for identification of effector T cell populations.

PREPARATION & STORAGE

This monoclonal antibody was purified from tissue culture supernatant via affinity chromatography. The purified antibody was conjugated under optimal conditions, with unreacted dye removed from the preparation. It is recommended to store the product undiluted at 4°C, and protected from prolonged exposure to light. Do not freeze.

APPLICATION NOTES

This antibody preparation has been quality-tested for flow cytometry using mouse spleen cells, or an appropriate cell type (where indicated). The amount of antibody required for optimal staining of a cell sample should be determined empirically in your system.

REFERENCES

Thaventhiran JED, Hoffmann A, Magiera L, de la Roche M, Lingel H, Brunner-Weinzierl M, and Fearon DT. 2012. Proc. Natl. Acad. Sci. 10:1073. (flow cytometry). Tessmer MS, Fugere C, Stevenaert F, Naidenko OV, Chong HJ, Leclercq G, and Brossay L. 2007. Int. Immunol. 19:391-400. (immunoprecipitation, in vitro blocking, flow cytometry) Robbins SH, Nguyen KB, Takahashi N, Mikayama T, Biron CA, and Brossay L. 2002. J. Immunol. 168: 2585-2589. (in vitro blocking) Hanke T, Corral L, Vance RE, and Raulet DH. 1998. Eur. J. Immunol. 28(12): 4409-4417. (Origination of 2F1 clone)

NOTE: Please choose the appropriate format for each application. Citations are provided as a convenience to you; please consult Materials and Methods sections for additional details about the use of any product in these publications.

For Research Use Only.

Not for use in diagnostic or therapeutic procedures. Not for resale. Not for distribution without written consent. Tonbo Biosciences will not be held responsible for patent infringement or other violations that may occur with the use of our products. Tonbo Biosciences, Tonbo Biosciences Logo and all other trademarks are the property of Tonbo Biotechnologies Corporation. © 2013 Tonbo Biosciences.