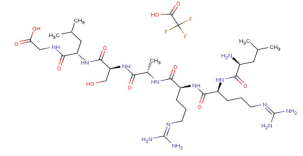


## Data Sheet (Cat.No.TP1351L)

### Kemptide TFA

#### Chemical Properties

CAS No.:	160414-77-7
Formula:	C <sub>34</sub> H <sub>62</sub> F <sub>3</sub> N <sub>13</sub> O <sub>11</sub>
Molecular Weight:	885.93
Appearance:	N/A
Storage:	0-4°C for short term (days to weeks), or -20°C for long term (months).



#### Biological Description

Description	Kemptide TFA is a synthetic heptapeptide, acting as a substrate for cAMP-dependent protein kinase (PK).
-------------	---

#### Solubility Information

Solubility	DMSO: 10 mM ( < 1 mg/ml refers to the product slightly soluble or insoluble)
------------	---

#### Preparing Stock Solutions

	1mg	5mg	10mg
1 mM	1.129 mL	5.644 mL	11.288 mL
5 mM	0.226 mL	1.129 mL	2.258 mL
10 mM	0.113 mL	0.564 mL	1.129 mL
50 mM	0.023 mL	0.113 mL	0.226 mL

Please select the appropriate solvent to prepare the stock solution, according to the solubility of the product in different solvents. The storage conditions and period of the stock solution: - 80 °C for 6 months; - 20 °C for 1 month. Please use it as soon as possible.

#### Reference

- Kübler D, et al. Evidence for ecto-protein kinase activity that phosphorylates Kemptide in a cyclic AMP-dependent mode. *J Biol Chem.* 1989 Aug 25;264(24):14549-55.
- Duncan FE, et al. Transducin-like enhancer of split-6 (TLE6) is a substrate of protein kinase A activity during mouse oocyte maturation. *Biol Reprod.* 2014 Mar 20;90(3):63.

Inhibitors · Natural Compounds · Compound Libraries

This product is for Research Use Only · Not for Human or Veterinary or Therapeutic Use.

Tel:781-999-4286

E-mail:[info@targetmol.com](mailto:info@targetmol.com)

Address:36 Washington Street,Wellesley Hills,MA 02481