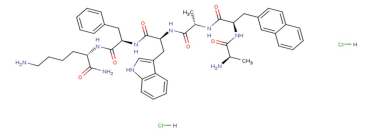


Data Sheet (Cat.No.T5025)

Pralmorelin

Chemical Properties

CAS No.:	158861-67-7
Formula:	C45H55N9O6
Molecular Weight:	817.99
Appearance:	white to beige lyophilized powder
Storage:	0-4°C for short term (days to weeks), or -20°C for long term (months).



Biological Description

Description	Pralmorelin is an oral active synthetic peptide analogue of MEK. Pralmorelin is an auxin releasing peptide/growth hormone secretory receptor agonist, can selectively stimulate ghrelin receptor and cause growth hormone release, has shown anti-inflammatory activity.
Targets(IC ₅₀)	GHS-R: None
In vitro	An anti-inflammatory role for ghrelin (GHRP-2) in PKC-mediated inflammation of granulosa cells, at least in part, due to its inhibitory effect on PKC-induced activation of p38, JNK and NF-κB, possibly by targeting to MKP-1 and PP2A[1].
In vivo	An insulin tolerance test (ITT), CRH stimulation test, and GHRP-2 test on 47 patients suspected of having a hypothalamo-pituitary disorder were preformed. The results indicate that the GHRP-2 test may induce ACTH secretion from the pituitary gland through direct stimulation[2].

Solubility Information

Solubility	< 1 mg/ml refers to the product slightly soluble or insoluble
------------	---

Preparing Stock Solutions

	1mg	5mg	10mg
1 mM	1.223 mL	6.113 mL	12.225 mL
5 mM	0.245 mL	1.223 mL	2.445 mL
10 mM	0.122 mL	0.611 mL	1.223 mL
50 mM	0.024 mL	0.122 mL	0.245 mL

Please select the appropriate solvent to prepare the stock solution, according to the solubility of the product in different solvents. The storage conditions and period of the stock solution: - 80 °C for 6 months; - 20 °C for 1 month. Please use it as soon as possible.

Reference

- Chao Y N , Sun D , Peng Y C , et al. Growth Hormone Releasing Peptide-2 Attenuation of Protein Kinase C-Induced Inflammation in Human Ovarian Granulosa Cells[J]. International Journal of Molecular Sciences, 2016.
- Arimura H , Hashiguchi H , Yamamoto K , et al. Investigation of the clinical significance of the growth hormone-releasing peptide-2 test for the diagnosis of secondary adrenal failure[J]. Endocrine Journal, 2016, 63(6):533-544.

Inhibitors · Natural Compounds · Compound Libraries

This product is for Research Use Only · Not for Human or Veterinary or Therapeutic Use.

Tel:781-999-4286

E-mail:info@targetmol.com

Address:36 Washington Street,Wellesley Hills,MA 02481