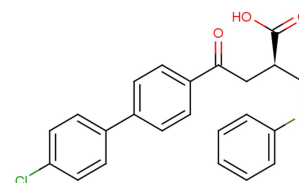


Tanomastat

Chemical Properties

CAS No.:	179545-77-8
Formula:	C ₂₃ H ₁₉ ClO ₃ S
Molecular Weight:	410.91
Appearance:	N/A
Storage:	0-4°C for short term (days to weeks), or -20°C for long term (months).



Biological Description

Description	Tanomastat is an orally bioavailable and non-peptidic biphenyl matrix metalloproteinases inhibitor. For MMP-2, MMP-3, MMP-9, MMP-13 the Ki values are 11, 143, 301, and 1470 nM respectively.
Targets(IC ₅₀)	MMP-2: 11 nM (ki) MMP-3: 143 nM (ki) MMP-9: 301 nM (ki) MMP-13: 1470 nM (ki)
In vitro	Tanomastat (1-100 μM; 5 days) inhibits tubule formation completely at 15-100 μM. Tanomastat (1-10000 nM; 6 hours) prevents matrix invasion by endothelial cells in a concentration-dependent manner (IC ₅₀ =840 nM) [2][3].
In vivo	Tanomastat (100 mg/kg; p.o.; daily for a 7-week period) inhibits local tumor regrowth and inhibits the number and volume of lung metastases [3].

Solubility Information

Solubility	< 1 mg/ml refers to the product slightly soluble or insoluble
------------	---

Preparing Stock Solutions

	1mg	5mg	10mg
1 mM	2.434 mL	12.168 mL	24.336 mL
5 mM	0.487 mL	2.434 mL	4.867 mL
10 mM	0.243 mL	1.217 mL	2.434 mL
50 mM	0.049 mL	0.243 mL	0.487 mL

Please select the appropriate solvent to prepare the stock solution, according to the solubility of the product in different solvents. The storage conditions and period of the stock solution: - 80 °C for 6 months; - 20 °C for 1 month. Please use it as soon as possible.

Reference

1. Leung D, et al. Protease inhibitors: current status and future prospects. *J Med Chem.* 2000 Feb 10;43(3):305-41.
2. Gatto C, et al. BAY 12-9566, a novel inhibitor of matrix metalloproteinases with antiangiogenic activity. *Clin Cancer Res.* 1999 Nov;5(11):3603-7.
3. Nozaki S, et al. Activity of biphenyl matrix metalloproteinase inhibitor BAY 12-9566 in a human breast cancer orthotopic model. *Clin Exp Metastasis.* 2003;20(5):407-12.

Inhibitors · Natural Compounds · Compound Libraries

This product is for Research Use Only · Not for Human or Veterinary or Therapeutic Use.

Tel:781-999-4286

E-mail:info@targetmol.com

Address:36 Washington Street,Wellesley Hills,MA 02481