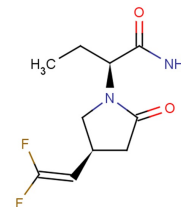


Data Sheet (Cat.No.T16869)

Seletracetam

Chemical Properties

CAS No.:	357336-74-4
Formula:	C10H14F2N2O2
Molecular Weight:	232.23
Appearance:	N/A
Storage:	0-4°C for short term (days to weeks), or -20°C for long term (months).



Biological Description

Description	Seletracetam is an analog of the antiepileptic agent Levetiracetam. Seletracetam is a small molecule SV2A modulator for the research of epilepsy.
Targets(IC ₅₀)	SV2A: None
In vitro	Seletracetam inhibits high-voltage-activated Ca ²⁺ currents and intracellular Ca ²⁺ increase in rat cortical neurons in vitro. Seletracetam decreases synaptic responses in time-, frequency- and concentration-dependent manner. Seletracetam decreases seizure activity in a number of epilepsy models and binds to the synaptic vesicle protein SV2A. Seletracetam modifies rates of presynaptic release [2].

Solubility Information

Solubility	< 1 mg/ml refers to the product slightly soluble or insoluble
------------	---

Preparing Stock Solutions

	1mg	5mg	10mg
1 mM	4.306 mL	21.53 mL	43.061 mL
5 mM	0.861 mL	4.306 mL	8.612 mL
10 mM	0.431 mL	2.153 mL	4.306 mL
50 mM	0.086 mL	0.431 mL	0.861 mL

Please select the appropriate solvent to prepare the stock solution, according to the solubility of the product in different solvents. The storage conditions and period of the stock solution: - 80 °C for 6 months; - 20 °C for 1 month. Please use it as soon as possible.

Reference

- Pollard JR, et al. Seletracetam, a small molecule SV2A modulator for the treatment of epilepsy. *Curr Opin Investig Drugs*. 2008 Jan;9(1):101-7.
- Yang X, et al. Seletracetam enhances short term depression in vitro. *Epilepsy Res*. 2015 Nov;117:17-22.
- Martella G, et al. Seletracetam (ucb 44212) inhibits high-voltage-activated Ca²⁺ currents and intracellular Ca²⁺ increase in rat cortical neurons in vitro. *Epilepsia*. 2009 Apr;50(4):702-10.

Inhibitors · Natural Compounds · Compound Libraries

This product is for Research Use Only · Not for Human or Veterinary or Therapeutic Use.

Tel:781-999-4286

E-mail:info@targetmol.com

Address:36 Washington Street,Wellesley Hills,MA 02481