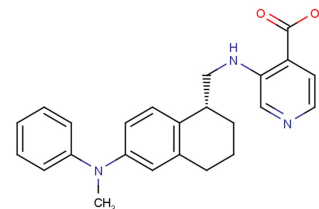


QC6352

Chemical Properties

CAS No.:	1851373-36-8
Formula:	C ₂₄ H ₂₅ N ₃ O ₂
Molecular Weight:	387.47
Appearance:	N/A
Storage:	0-4°C for short term (days to weeks), or -20°C for long term (months).



Biological Description

Description	QC6352 is a selective and effective KDM4C inhibitor (IC ₅₀ : 35 nM).
Targets(IC ₅₀)	KDM4C: 35 nM
In vitro	QC6352 is an effective KDM4C inhibitor (IC ₅₀ : 35±8 nM). QC6352 blocks the proliferation and self-renewal of BCSCs. In a concentration-dependent manner QC6352 dramatically decreases the anchorage-independent sphere-forming capacity of BCSC1 and BCSC2. The protein levels of (Epidermal growth factor receptor) EGFR are reduced in both BCSC1 and BCSC2 upon treatment with QC6352 [1][2].
In vivo	QC6352 strongly affects tumor growth and the final tumor weight of both BCSC1 and BCSC2 xenografts. QC6352 treatment is well tolerated and does not affect body weight of the mice. Treatment with the KDM4 inhibitor QC6352 blocks BCSC xenograft tumor growth[2].

Solubility Information

Solubility	DMSO: 25 mg/mL (64.52 mM) (< 1 mg/ml refers to the product slightly soluble or insoluble)
------------	---

Preparing Stock Solutions

	1mg	5mg	10mg
1 mM	2.581 mL	12.904 mL	25.808 mL
5 mM	0.516 mL	2.581 mL	5.162 mL
10 mM	0.258 mL	1.29 mL	2.581 mL
50 mM	0.052 mL	0.258 mL	0.516 mL

Please select the appropriate solvent to prepare the stock solution, according to the solubility of the product in different solvents. The storage conditions and period of the stock solution: - 80 °C for 6 months; - 20 °C for 1 month. Please use it as soon as possible.

Reference

- Chen YK, et al. Design of KDM4 Inhibitors with Antiproliferative Effects in Cancer Models. ACS Med Chem Lett. 2017 Jul 27;8(8):869-874.
- Metzger E, et al. KDM4 inhibition targets breast cancer stem-like cells. Cancer Res. 2017 Sep 7. pii: canres.1754.

Inhibitors · Natural Compounds · Compound Libraries

This product is for Research Use Only · Not for Human or Veterinary or Therapeutic Use.

Tel:781-999-4286

E-mail:info@targetmol.com

Address:36 Washington Street,Wellesley Hills,MA 02481