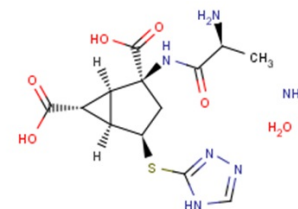


LY2979165

Chemical Properties

CAS No.:	1311385-32-6
Formula:	C ₁₃ H ₂₂ N ₆ O ₆ S
Molecular Weight:	390.42
Appearance:	N/A
Storage:	0-4°C for short term (days to weeks), or -20°C for long term (months).



Biological Description

Description	LY2979165 is a mGlu2 agonist and is a novel potent agent. It is used as anti-depressants.
Targets(IC ₅₀)	Others: None

Solubility Information

Solubility	H ₂ O: 50 mg/mL (128.07 mM) (< 1 mg/ml refers to the product slightly soluble or insoluble)
------------	--

Preparing Stock Solutions

	1mg	5mg	10mg
1 mM	2.561 mL	12.807 mL	25.613 mL
5 mM	0.512 mL	2.561 mL	5.123 mL
10 mM	0.256 mL	1.281 mL	2.561 mL
50 mM	0.051 mL	0.256 mL	0.512 mL

Please select the appropriate solvent to prepare the stock solution, according to the solubility of the product in different solvents. The storage conditions and period of the stock solution: - 80 °C for 6 months; - 20 °C for 1 month. Please use it as soon as possible.

Reference

- <http://clinicaltrials.gov/ct2/show/NCT01383967>
- Hanna L, Ceolin L, Lucas S, Monn J, Johnson B, Collingridge G, Bortolotto Z, Lodge D. Differentiating the roles of mGlu2 and mGlu3 receptors using LY541850, an mGlu2 agonist/mGlu3 antagonist. *Neuropharmacology*. 2012 Mar 15.
- Ceolin L, Kantamneni S, Barker GR, Hanna L, Murray L, Warburton EC, Robinson ES, Monn JA, Fitzjohn SM, Collingridge GL, Bortolotto ZA, Lodge D. Study of novel selective mGlu2 agonist in the temporo-ammonic input to CA1 neurons reveals reduced mGlu2 receptor activity. *Neuropharmacology*. 2012 Jun;61(6):1043-54.
- Liu W, Downing AC, Munsie LM, Chen P, Reed MR, Ruble CL, Landschulz KT, Kinon BJ, Nisenbaum LK. Pharmacogenetic analysis of the mGlu2/3 agonist LY2140023 monohydrate in the treatment of schizophrenia. *Pharmacogenomics J*. 2012 Jun;12(3):246-54.
- Dominguez C, Prieto L, Valli MJ, Massey SM, Bures M, Wright RA, Johnson BG, Andis SL, Kingston A, Schoepp DD, Monn JA. Methyl substitution of 2-aminobicyclo[3.1.0]hexane 2,6-dicarboxylate (LY354740) determines functional activity at metabotropic glutamate receptors. *Neuropharmacology*. 2012 Jun;61(6):1055-66.

Inhibitors · Natural Compounds · Compound Libraries

This product is for Research Use Only · Not for Human or Veterinary or Therapeutic Use.

Tel:781-999-4286

E-mail:info@targetmol.com

Address:36 Washington Street,Wellesley Hills,MA 02481