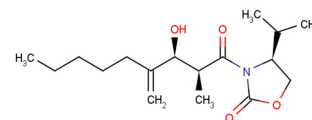


LMT-28

Chemical Properties

CAS No.:	1239600-18-0
Formula:	C ₁₇ H ₂₉ NO ₄
Molecular Weight:	311.42
Appearance:	N/A
Storage:	0-4°C for short term (days to weeks), or -20°C for long term (months).



Biological Description

Description	LMT-28 is an orally active and the first synthetic IL-6 inhibitor. That functions through direct binding to gp130. LMT-28 displays low toxicity and selectively inhibits IL-6-induced phosphorylation of STAT3, JAK2, and gp130.
Targets(IC ₅₀)	IL-6: None
In vitro	LMT-28 decreases IL-6-induced luciferase activity by ~90% at a concentration of 50 μM and exhibits (IC ₅₀ : 5.9 μM). LMT-28 (1-100 μM; 1 hour) selectively inhibits IL-6-induced phosphorylation of STAT3, JAK2, and gp130. LMT-28 (1-10 μM; 72 hours) inhibits IL-6-induced proliferation of the human erythroleukemic cell line TF-1 .
In vivo	LMT-28 (0.25 or 1 mg/kg; p.o.) ameliorates the progression of pancreatitis in mice. LMT-28 (0-0.5 mg/kg; p.o.; once daily for 15 days) alleviates CIA in mice. LMT-28 binds directly and specifically to gp130, and thereby inhibits the interaction of gp130 with the IL-6/IL-6Rα complex .

Solubility Information

Solubility	< 1 mg/ml refers to the product slightly soluble or insoluble
------------	---

Preparing Stock Solutions

	1mg	5mg	10mg
1 mM	3.211 mL	16.055 mL	32.111 mL
5 mM	0.642 mL	3.211 mL	6.422 mL
10 mM	0.321 mL	1.606 mL	3.211 mL
50 mM	0.064 mL	0.321 mL	0.642 mL

Please select the appropriate solvent to prepare the stock solution, according to the solubility of the product in different solvents. The storage conditions and period of the stock solution: - 80 °C for 6 months; - 20 °C for 1 month. Please use it as soon as possible.

Reference

1. Hong SS, et al. A Novel Small-Molecule Inhibitor Targeting the IL-6 Receptor β Subunit, Glycoprotein 130. J Immunol. 2015 Jul 1;195(1):237-45.

Inhibitors · Natural Compounds · Compound Libraries

This product is for Research Use Only · Not for Human or Veterinary or Therapeutic Use.

Tel:781-999-4286

E-mail:info@targetmol.com

Address:36 Washington Street,Wellesley Hills,MA 02481