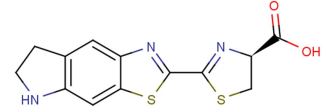


Data Sheet (Cat.No.T15030)

CycLuc1

Chemical Properties

CAS No.:	1247879-16-8
Formula:	C ₁₃ H ₁₁ N ₃ O ₂ S ₂
Molecular Weight:	305.38
Appearance:	N/A
Storage:	0-4°C for short term (days to weeks), or -20°C for long term (months).



Biological Description

Description	CycLuc1 is a substrate of brain penetrant luciferase.
Targets(IC ₅₀)	Luciferase: None

Solubility Information

Solubility	DMSO: 83.33 mg/mL (272.87 mM) (< 1 mg/ml refers to the product slightly soluble or insoluble)
------------	---

Preparing Stock Solutions

	1mg	5mg	10mg
1 mM	3.275 mL	16.373 mL	32.746 mL
5 mM	0.655 mL	3.275 mL	6.549 mL
10 mM	0.327 mL	1.637 mL	3.275 mL
50 mM	0.065 mL	0.327 mL	0.655 mL

Please select the appropriate solvent to prepare the stock solution, according to the solubility of the product in different solvents. The storage conditions and period of the stock solution: - 80 °C for 6 months; - 20 °C for 1 month. Please use it as soon as possible.

Reference

- Shiv K, et al. Abstract 4112: Synthetic luciferin, CycLuc1, improves bioluminescence imaging for intracranial glioblastoma xenografts. 10.1158/1538-7445.AM2018-4112

Inhibitors · Natural Compounds · Compound Libraries

This product is for Research Use Only · Not for Human or Veterinary or Therapeutic Use.

Tel:781-999-4286

E-mail:info@targetmol.com

Address:36 Washington Street,Wellesley Hills,MA 02481