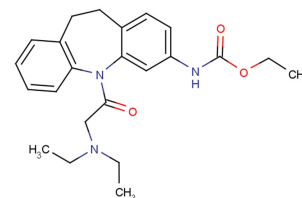


### CINPA1

#### Chemical Properties

CAS No.:	102636-74-8
Formula:	C23H29N3O3
Molecular Weight:	395.49
Appearance:	N/A
Storage:	0-4°C for short term (days to weeks), or -20°C for long term (months).



#### Biological Description

Description	CINPA1 is a potent and specific inhibitor of the constitutive androstane receptor (CAR) that does not activate the PXR. CINPA1 reduces CAR-mediated transcription (IC50: ~70 nM).
Targets(IC50)	CAR: ~70 nM
In vitro	CINPA1 has no cytotoxic effects up to 30 µM. CINPA1 inhibits CAR-mediated gene expression in primary human hepatocytes, where CAR is endogenously expressed and it efficiently inhibits CAR-LBD interaction with the coactivator peptide. CINPA1 (1 µM; 24 hours) inhibits CAR-mediated transactivation without activating PXR in HepG2 cells. CINPA1 does not alter the protein levels or subcellular localization of CAR. CINPA1 increases corepressor and reduces coactivator interaction with the CAR ligand-binding domain in mammalian two-hybrid assays. CINPA1 disrupts CAR binding to the promoter regions of target genes in chromatin immunoprecipitation assays.

#### Solubility Information

Solubility	DMSO: 250 mg/mL (632.13 mM) ( < 1 mg/ml refers to the product slightly soluble or insoluble)
------------	---

#### Preparing Stock Solutions

	1mg	5mg	10mg
1 mM	2.529 mL	12.643 mL	25.285 mL
5 mM	0.506 mL	2.529 mL	5.057 mL
10 mM	0.253 mL	1.264 mL	2.529 mL
50 mM	0.051 mL	0.253 mL	0.506 mL

Please select the appropriate solvent to prepare the stock solution, according to the solubility of the product in different solvents. The storage conditions and period of the stock solution: - 80 °C for 6 months; - 20 °C for 1 month. Please use it as soon as possible.

#### Reference

1. Cherian MT, et al. CINPA1 is an inhibitor of constitutive androstane receptor that does not activate pregnane X receptor. Mol Pharmacol. 2015 May;87(5):878-89.

Inhibitors · Natural Compounds · Compound Libraries

This product is for Research Use Only · Not for Human or Veterinary or Therapeutic Use.

Tel:781-999-4286

E-mail:info@targetmol.com

Address:36 Washington Street,Wellesley Hills,MA 02481