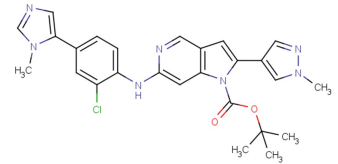


## Data Sheet (Cat.No.T14906)

CCT251455

### Chemical Properties

CAS No.:	1400284-80-1
Formula:	C <sub>26</sub> H <sub>26</sub> ClN <sub>7</sub> O <sub>2</sub>
Molecular Weight:	503.98
Appearance:	N/A
Storage:	0-4°C for short term (days to weeks), or -20°C for long term (months).



### Biological Description

Description	CCT251455 is an inhibitor of mitotic kinase monopolar spindle 1 (MPS1; IC <sub>50</sub> : 3 nM).
Targets(IC <sub>50</sub> )	MPS1: 3 nM
In vitro	CCT251455 is a highly potent inhibitor of MPS1 that demonstrates high selectivity versus kinases tested in a broad kinome profiling panel. CCT251455 inhibits P-MPS1 (IC <sub>50</sub> : 0.04 μM in the cell-based assay; GI <sub>50</sub> : 0.16 μM).
In vivo	CCT251455 demonstrates a good oral pharmacokinetic profile in mice and rats as well as inhibition of MPS1 activity in vivo following oral administration.

### Solubility Information

Solubility	< 1 mg/ml refers to the product slightly soluble or insoluble
------------	---

#### Preparing Stock Solutions

	1mg	5mg	10mg
1 mM	1.984 mL	9.921 mL	19.842 mL
5 mM	0.397 mL	1.984 mL	3.968 mL
10 mM	0.198 mL	0.992 mL	1.984 mL
50 mM	0.04 mL	0.198 mL	0.397 mL

Please select the appropriate solvent to prepare the stock solution, according to the solubility of the product in different solvents. The storage conditions and period of the stock solution: - 80 °C for 6 months; - 20 °C for 1 month. Please use it as soon as possible.

#### Reference

1. Naud S, et al. Structure-based design of orally bioavailable 1H-pyrrolo[3,2-c]pyridine inhibitors of mitotic kinase monopolar spindle 1 (MPS1). *J Med Chem.* 2013 Dec 27;56(24):10045-65.

Inhibitors · Natural Compounds · Compound Libraries

This product is for Research Use Only · Not for Human or Veterinary or Therapeutic Use.

Tel:781-999-4286

E-mail:[info@targetmol.com](mailto:info@targetmol.com)

Address:36 Washington Street,Wellesley Hills,MA 02481