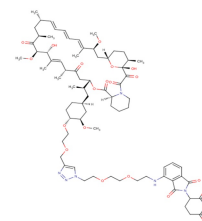


## FKBP12 PROTAC RC32

### Chemical Properties

|                   |  |
|-------------------|--|
| CAS No.:          | 2375555-66-9   |
| Formula:          | C75H107N7O20   |
| Molecular Weight: | 1426.69  |
| Appearance:       | N/A  |
| Storage:          | 0-4°C for short term (days to weeks), or -20°C for long term (months). |



### Biological Description

|                            |  |
|----------------------------|--|
| Description                | FKBP12 PROTAC RC32 contains conjugation of Rapamycin and a ligand for an E3 ubiquitin ligase. FKBP12 PROTAC RC32 (RC32) is a potent FKBP12 degrader based on PROTAC technology.  |
| Targets(IC <sub>50</sub> ) | Cereblon: None   |
| In vitro                   | FKBP12 PROTAC RC32 (RC32; 0.1-1000 nM; for 12 hours) results in 50% protein degradation (DC50) of ~0.3 nM after only 12 hours of treatment.  |
| In vivo                    | RC32 efficiently degrades the FKBP12 protein in most of the organs examined in Bama pigs (20 kg). RC32 efficiently degrades FKBP12 in the heart, liver, kidney, spleen, lung, and stomach of rhesus monkeys. RC32 degrades the FKBP12 protein in most of the organs of treated mice, except for the brain after only 1 day of treatment in mice. RC32 significantly degrades FKBP12 in mice. |

### Solubility Information

|            |   |
|------------|---|
| Solubility | < 1 mg/ml refers to the product slightly soluble or insoluble |
|------------|---|

#### Preparing Stock Solutions

|       | 1mg      | 5mg      | 10mg     |
|-------|----------|----------|----------|
| 1 mM  | 0.701 mL | 3.505 mL | 7.009 mL |
| 5 mM  | 0.14 mL  | 0.701 mL | 1.402 mL |
| 10 mM | 0.07 mL  | 0.35 mL  | 0.701 mL |
| 50 mM | 0.014 mL | 0.07 mL  | 0.14 mL  |

Please select the appropriate solvent to prepare the stock solution, according to the solubility of the product in different solvents. The storage conditions and period of the stock solution: - 80 °C for 6 months; - 20 °C for 1 month. Please use it as soon as possible.

#### Reference

1. A chemical approach for global protein knockdown from mice to non-human primates. Cell Discov. 2019 Feb 5;5:10.

Inhibitors · Natural Compounds · Compound Libraries

This product is for Research Use Only · Not for Human or Veterinary or Therapeutic Use.

Tel:781-999-4286

E-mail:[info@targetmol.com](mailto:info@targetmol.com)

Address:36 Washington Street,Wellesley Hills,MA 02481