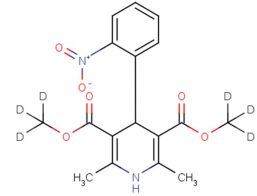


Data Sheet (Cat.No.T12222)

Nifedipine D6

Chemical Properties

CAS No.:	1188266-14-9
Formula:	C ₁₇ H ₁₂ D ₆ N ₂ O ₆
Molecular Weight:	352.37
Appearance:	N/A
Storage:	0-4°C for short term (days to weeks), or -20°C for long term (months).



Biological Description

Description	Nifedipine D6 is deuterium labeled nifedipine which is a potent blocker of calcium channel.
Targets(IC ₅₀)	Others: None

Solubility Information

Solubility	< 1 mg/ml refers to the product slightly soluble or insoluble
------------	---

Preparing Stock Solutions

	1mg	5mg	10mg
1 mM	2.838 mL	14.19 mL	28.379 mL
5 mM	0.568 mL	2.838 mL	5.676 mL
10 mM	0.284 mL	1.419 mL	2.838 mL
50 mM	0.057 mL	0.284 mL	0.568 mL

Please select the appropriate solvent to prepare the stock solution, according to the solubility of the product in different solvents. The storage conditions and period of the stock solution: - 80 °C for 6 months; - 20 °C for 1 month. Please use it as soon as possible.

Reference

- Patel DP, et al. Highly sensitive and rapid ultra-performance liquid chromatography-tandem mass spectrometry method for the determination of nifedipine in human plasma and its application to a bioequivalence study. Biomed Chromatogr. 2012 Dec;26(12):1509-18.

Inhibitors · Natural Compounds · Compound Libraries

This product is for Research Use Only · Not for Human or Veterinary or Therapeutic Use.

Tel:781-999-4286

E-mail:info@targetmol.com

Address:36 Washington Street,Wellesley Hills,MA 02481