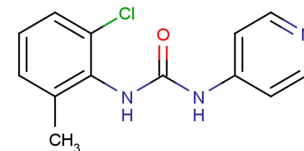


Data Sheet (Cat.No.T12156)

N-(2-Chloro-6-methylphenyl)-N'-4-pyridinylurea

Chemical Properties

CAS No.:	97627-24-2
Formula:	C13H12ClN3O
Molecular Weight:	261.71
Appearance:	N/A
Storage:	0-4°C for short term (days to weeks), or -20°C for long term (months).



Biological Description

Description	N-(2-Chloro-6-methylphenyl)-N'-4-pyridinylurea is an anticonvulsant agent, treatment of generalized tonic-clonic and partial seizures.
Targets(IC ₅₀)	Others: None
In vivo	N-(2-Chloro-6-methylphenyl)-N'-4-pyridinylurea shows anticonvulsant activity at 30 mg/kg in the initial tests with no signs of ataxia until 300 mg/kg. The activity seen with 30 mg/kg 37 is still present 4 h postdose. Compound is effective against seizures induced by maximal electroshock but does not protect mice from clonic seizures produced by the convulsant pentylenetetrazol. The overall pharmacological profile suggests that Compound would be of therapeutic use in the treatment of generalized tonic-clonic and partial seizures[1].

Solubility Information

Solubility	< 1 mg/ml refers to the product slightly soluble or insoluble
------------	---

Preparing Stock Solutions

	1mg	5mg	10mg
1 mM	3.821 mL	19.105 mL	38.21 mL
5 mM	0.764 mL	3.821 mL	7.642 mL
10 mM	0.382 mL	1.911 mL	3.821 mL
50 mM	0.076 mL	0.382 mL	0.764 mL

Please select the appropriate solvent to prepare the stock solution, according to the solubility of the product in different solvents. The storage conditions and period of the stock solution: - 80 °C for 6 months; - 20 °C for 1 month. Please use it as soon as possible.

Reference

1. Pavia MR, et al. N-Phenyl-N'-pyridinylureas as Anticonvulsant Agents. J. Med. Chem. 1990,33, 854-861

Inhibitors · Natural Compounds · Compound Libraries

This product is for Research Use Only · Not for Human or Veterinary or Therapeutic Use.

Tel:781-999-4286

E-mail:info@targetmol.com

Address:36 Washington Street,Wellesley Hills,MA 02481