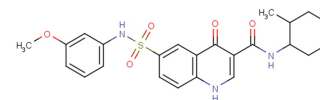


MTH1-IN-2

## Chemical Properties

CAS No.:	901044-91-5
Formula:	C <sub>24</sub> H <sub>27</sub> N <sub>3</sub> O <sub>5</sub> S
Molecular Weight:	469.55
Appearance:	N/A
Storage:	0-4°C for short term (days to weeks), or -20°C for long term (months).



## Biological Description

Description	MTH1-IN-2 is an inhibitor of MutT homolog 1 (MTH1), with anti-tumor activity.
Targets(IC <sub>50</sub> )	MTH1: None
In vitro	MTH1 is an inhibitors and for use in the treatment or prevention of cancer. The enzyme human MTH1 is a 2-hydroxy-dATP diphosphatase. MTH1 specifically assists RAS-induced tumors in preventing tumor-suppressive effects such as senescence whilst enabling maintenance and progression of the tumor. MTH1 inhibition helps impairing tumor growth by abrogating mitogenic signaling, epithelial-mesenchymal transition (EMT), a hallmark of progressing and aggressive tumors, anoikis inhibition and PI3K/Akt-mediated pro-survival signaling. MTH1 inhibitors induce oxidative DNA lesions[1].

## Solubility Information

Solubility	< 1 mg/ml refers to the product slightly soluble or insoluble
------------	---

### Preparing Stock Solutions

	1mg	5mg	10mg
1 mM	2.13 mL	10.648 mL	21.297 mL
5 mM	0.426 mL	2.13 mL	4.259 mL
10 mM	0.213 mL	1.065 mL	2.13 mL
50 mM	0.043 mL	0.213 mL	0.426 mL

Please select the appropriate solvent to prepare the stock solution, according to the solubility of the product in different solvents. The storage conditions and period of the stock solution: - 80 °C for 6 months; - 20 °C for 1 month. Please use it as soon as possible.

### Reference

1. Kilian Huber. Oxoquinoline derivatives as mth1 inhibitors for the therapy of cancer. WO2016135138A1.

Inhibitors · Natural Compounds · Compound Libraries

This product is for Research Use Only · Not for Human or Veterinary or Therapeutic Use.

Tel:781-999-4286

E-mail:[info@targetmol.com](mailto:info@targetmol.com)

Address:36 Washington Street,Wellesley Hills,MA 02481