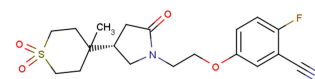


Lp-PLA2-IN-2

Chemical Properties

CAS No.:	2071636-15-0
Formula:	C ₁₉ H ₂₃ FN ₂ O ₄ S
Molecular Weight:	394.46
Appearance:	N/A
Storage:	0-4°C for short term (days to weeks), or -20°C for long term (months).



Biological Description

Description	Lp-PLA2-IN-2 is a selective and potent lipoprotein-associated phospholipase A2 (Lp-PLA2) inhibitor, with an IC ₅₀ of 120 nM for recombinant human Lp-PLA2.
Targets(IC ₅₀)	Lp-PLA2: 120 nM
In vitro	Lp-PLA2-IN-2 inhibits Human Lp-PLA2 with an IC ₅₀ of 62 nM in PED6 assay.
In vivo	Lp-PLA2-IN-2 (1 mg/kg; i.v.) treatment in rats shows that the Cl, V _{ss} and t _{1/2} values are 67 mL/min/kg, 1.2 L/kg, and 0.34 hours, respectively[1].

Solubility Information

Solubility	< 1 mg/ml refers to the product slightly soluble or insoluble
------------	---

Preparing Stock Solutions

	1mg	5mg	10mg
1 mM	2.535 mL	12.676 mL	25.351 mL
5 mM	0.507 mL	2.535 mL	5.07 mL
10 mM	0.254 mL	1.268 mL	2.535 mL
50 mM	0.051 mL	0.254 mL	0.507 mL

Please select the appropriate solvent to prepare the stock solution, according to the solubility of the product in different solvents. The storage conditions and period of the stock solution: - 80 °C for 6 months; - 20 °C for 1 month. Please use it as soon as possible.

Reference

1. Woolford AJ, et al. Fragment-Based Approach to the Development of an Orally Bioavailable Lactam Inhibitor of Lipoprotein-Associated Phospholipase A2 (Lp-PLA2). J Med Chem. 2016 Dec 8;59(23):10738-10749.

Inhibitors · Natural Compounds · Compound Libraries

This product is for Research Use Only · Not for Human or Veterinary or Therapeutic Use.

Tel:781-999-4286

E-mail:info@targetmol.com

Address:36 Washington Street,Wellesley Hills,MA 02481