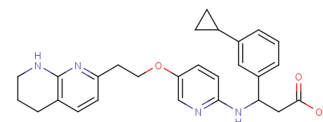


Integrin-IN-2

Chemical Properties

CAS No.:	2378617-67-3
Formula:	C27H30N4O3
Molecular Weight:	458.55
Appearance:	N/A
Storage:	0-4°C for short term (days to weeks), or -20°C for long term (months).



Biological Description

Description	Integrin-IN-2 is an orally bioavailable pan α integrin inhibitor. Integrin-IN-2 can increase the $\alpha\beta6$, $\alpha\beta3$, $\alpha\beta5$ and $\alpha\beta8$ binding affinities with pIC50 values of 7.8, 8.4, 8.4 and 7.4, respectively.
Targets(IC50)	$\alpha\beta6$: 7.8(pIC50) $\alpha\beta3$: 8.4 $\alpha\beta5$: 8.4 $\alpha\beta8$: 7.4
In vivo	In vivo pharmacokinetic studies in CD rats revealed that racemic Integrin-IN-2 (compound 39) has a low plasma clearance of 8 mL/(min kg), a low to moderate volume of distribution of 0.5 L/kg, a moderate half-life of 1.8 h, and very high bioavailability of 98%.

Solubility Information

Solubility	< 1 mg/ml refers to the product slightly soluble or insoluble
------------	---

Preparing Stock Solutions

	1mg	5mg	10mg
1 mM	2.181 mL	10.904 mL	21.808 mL
5 mM	0.436 mL	2.181 mL	4.362 mL
10 mM	0.218 mL	1.09 mL	2.181 mL
50 mM	0.044 mL	0.218 mL	0.436 mL

Please select the appropriate solvent to prepare the stock solution, according to the solubility of the product in different solvents. The storage conditions and period of the stock solution: - 80 °C for 6 months; - 20 °C for 1 month. Please use it as soon as possible.

Reference

1. Anderson NA, et al. Discovery of an Orally Bioavailable Pan α Integrin Inhibitor for Idiopathic Pulmonary Fibrosis. J Med Chem. 2019 Oct 10;62(19):8796-8808.

Inhibitors · Natural Compounds · Compound Libraries

This product is for Research Use Only · Not for Human or Veterinary or Therapeutic Use.

Tel:781-999-4286

E-mail:info@targetmol.com

Address:36 Washington Street,Wellesley Hills,MA 02481