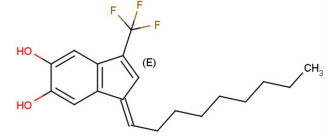


Data Sheet (Cat.No.T11141)

E64FC26

Chemical Properties

CAS No.:	2285446-62-8
Formula:	C ₁₉ H ₂₃ F ₃ O ₂
Molecular Weight:	340.38
Appearance:	N/A
Storage:	0-4°C for short term (days to weeks), or -20°C for long term (months).



Biological Description

Description	E64FC26 shows anti-myeloma activity. E64FC26 is a potent pan-inhibitor of the protein disulfide isomerase (PDI) family, with IC ₅₀ s of 1.9, 20.9, 25.9, 16.3, and 25.4 μM against PDIA1, PDIA3, PDIA4, TXNDC5, and PDIA6.
Targets(IC ₅₀)	Others: None
In vitro	E64FC26 is more cytotoxic against a genetically diverse panel of multiple myeloma (MM) cell lines (KMS11, OPM2, MM.1S BzR, MM.1S, SA-13, U266 BzR, ANBL6, KMS12PE, U266, 8226 DxR, 8226 BzR, KMS12BM, H929, 8226 cells) when compared to non-malignant cells. E64FC26 (0.01-100 μM; 24 hours) shows anti-MM activity, with an EC ₅₀ of 0.59 μM.
In vivo	E64FC26 (2 mg/ kg; i.p.; three days a week for 7 days) shows anti-MM effect in NSG mice model, and increases median survival by 2 weeks. The combination of E64FC26 and Bortezomib produced the greatest improvement in survival, extending the median survival by 20 days.

Solubility Information

Solubility	< 1 mg/ml refers to the product slightly soluble or insoluble
------------	---

Preparing Stock Solutions

	1mg	5mg	10mg
1 mM	2.938 mL	14.689 mL	29.379 mL
5 mM	0.588 mL	2.938 mL	5.876 mL
10 mM	0.294 mL	1.469 mL	2.938 mL
50 mM	0.059 mL	0.294 mL	0.588 mL

Please select the appropriate solvent to prepare the stock solution, according to the solubility of the product in different solvents. The storage conditions and period of the stock solution: - 80 °C for 6 months; - 20 °C for 1 month. Please use it as soon as possible.

Reference

1. Robinson RM, et al. Inhibitors of the protein disulfide isomerase family for the treatment of multiple myeloma. *Leukemia*. 2019 Apr;33(4):1011-1022.

Inhibitors · Natural Compounds · Compound Libraries

This product is for Research Use Only · Not for Human or Veterinary or Therapeutic Use.

Tel:781-999-4286

E-mail:info@targetmol.com

Address:36 Washington Street,Wellesley Hills,MA 02481