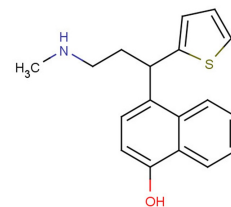


## Duloxetine metabolite Para-Naphthol Duloxetine

**Chemical Properties**

CAS No.:	949095-98-1
Formula:	C <sub>18</sub> H <sub>19</sub> NOS
Molecular Weight:	297.41
Appearance:	N/A
Storage:	0-4°C for short term (days to weeks), or -20°C for long term (months).

**Biological Description**

Description	Para-Naphthol Duloxetine is a serotonin-norepinephrine reuptake inhibitor (SNRI), is a metabolite of Duloxetine.
Targets(IC <sub>50</sub> )	Others: None

**Solubility Information**

Solubility	< 1 mg/ml refers to the product slightly soluble or insoluble
------------	---

## Preparing Stock Solutions

	1mg	5mg	10mg
1 mM	3.362 mL	16.812 mL	33.624 mL
5 mM	0.672 mL	3.362 mL	6.725 mL
10 mM	0.336 mL	1.681 mL	3.362 mL
50 mM	0.067 mL	0.336 mL	0.672 mL

Please select the appropriate solvent to prepare the stock solution, according to the solubility of the product in different solvents. The storage conditions and period of the stock solution: - 80 °C for 6 months; - 20 °C for 1 month. Please use it as soon as possible.

Inhibitors · Natural Compounds · Compound Libraries

This product is for Research Use Only · Not for Human or Veterinary or Therapeutic Use.

Tel:781-999-4286

E-mail:[info@targetmol.com](mailto:info@targetmol.com)

Address:36 Washington Street,Wellesley Hills,MA 02481