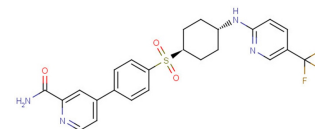


## CCR6 inhibitor 1

### Chemical Properties

CAS No.:	T10715
Formula:	C <sub>24</sub> H <sub>23</sub> F <sub>3</sub> N <sub>4</sub> O <sub>3</sub> S
Molecular Weight:	504.52
Appearance:	N/A
Storage:	0-4°C for short term (days to weeks), or -20°C for long term (months).



### Biological Description

Description	CCR6 inhibitor 1 is a potent and selective CCR6 inhibitor (IC <sub>50</sub> s: 0.45 and 6 nM for monkey and human CCR6), much more selective at CCR6 over human CCR1 (IC <sub>50</sub> , > 30000 nM), and CCR7 (IC <sub>50</sub> , 9400 nM).
Targets(IC <sub>50</sub> )	Monkey CCR6: 0.45 nM Human CCR6: 6 nM Human CCR7: 9400 nM
In vitro	CCR6 inhibitor 1 (Compound 35) inhibits the human B cell migration L20-induced.

### Solubility Information

Solubility	DMSO: 125 mg/mL (247.76 mM) ( < 1 mg/ml refers to the product slightly soluble or insoluble)
------------	---

#### Preparing Stock Solutions

	1mg	5mg	10mg
1 mM	1.982 mL	9.91 mL	19.821 mL
5 mM	0.396 mL	1.982 mL	3.964 mL
10 mM	0.198 mL	0.991 mL	1.982 mL
50 mM	0.04 mL	0.198 mL	0.396 mL

Please select the appropriate solvent to prepare the stock solution, according to the solubility of the product in different solvents. The storage conditions and period of the stock solution: - 80 °C for 6 months; - 20 °C for 1 month. Please use it as soon as possible.

#### Reference

1. Tawaraishi T, et al. Identification of a novel series of potent and selective CCR6 inhibitors as biological probes. *Bioorg Med Chem Lett.* 2018 Oct 1;28(18):3067-3072.

Inhibitors · Natural Compounds · Compound Libraries

This product is for Research Use Only · Not for Human or Veterinary or Therapeutic Use.

Tel:781-999-4286

E-mail:[info@targetmol.com](mailto:info@targetmol.com)

Address:36 Washington Street,Wellesley Hills,MA 02481