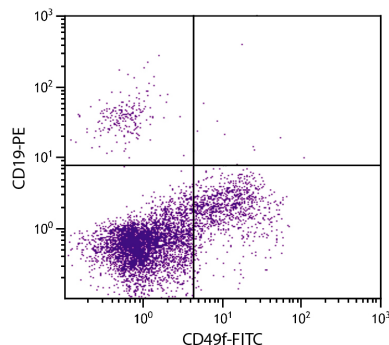




Mouse Anti-Human CD49f

Cat. No.	Format	Size
9650-01	Purified (UNLB)	0.1 mg
9650-02	Fluorescein (FITC)	100 tests
9650-09	R-phycoerythrin (PE)	100 tests



Human peripheral blood lymphocytes were stained with Mouse Anti-Human CD49f-FITC (SB Cat. No. 9650-02) and Mouse Anti-Human CD19-PE (SB Cat. No. 9340-09).

Overview

Clone	4F10
Isotype	Mouse (BALB/c) IgG _{2b} K
Immunogen	SW1222 human colorectal cell line
Specificity	Human CD49f; Mr 125 kDa
Alternate Name(s)	Integrin α_6 chain, VLA-6 α chain, platelet gpIc
Workshop	N/A

Description

CD49f is the 125 kDa integrin α_6 chain which associates noncovalently with the integrin β_1 subunit (CD29) and with the integrin β_4 (CD104) chain to form, respectively, the very late antigen-6 (VLA-6) and $\alpha_6\beta_4$ integrin heterodimers. VLA-6 is expressed on thymocytes, T lymphocytes, monocytes, and platelets. CD49f/CD29 expression is upregulated on activated T lymphocytes and memory T cells. VLA-6 serves as the laminin receptor on platelets, monocytes, and T cells. VLA-6-mediated binding to laminin provides a costimulatory signal to T cells for activation and proliferation.

Applications

FC – Quality tested ⁴
 IHC-FS – Reported in literature ¹
 IHC-PS – Reported in literature ²
 IP – Reported in literature ³

Working Dilutions

Flow Cytometry	Purified (UNLB) antibody	$\leq 1 \mu\text{g}/10^6$ cells
	FITC and PE conjugates	$10 \mu\text{L}/10^6$ cells
For flow cytometry, the suggested use of these reagents is in a final volume of 100 μL .		

Other Applications Since applications vary, you should determine the optimum working dilution for the product that is appropriate for your specific need.

For Research Use Only. Not for Diagnostic or Therapeutic Use.

Handling and Storage

- The purified (UNLB) antibody is supplied as 0.1 mg of purified immunoglobulin in 1.0 mL of borate buffered saline, pH 8.2. *No preservatives or amine-containing buffer salts added.* Store at 2-8°C.
- The fluorescein (FITC) conjugate is supplied as 100 tests in 1.0 mL of PBS/NaN₃. Store at 2-8°C.
- The R-phycoerythrin (PE) conjugate is supplied as 100 tests in 1.0 mL of PBS/NaN₃ and a stabilizing agent. Store at 2-8°C. **Do not freeze!**
- Protect fluorochrome-conjugated forms from light. Reagents are stable for the period shown on the label if stored as directed.

Warning

Some reagents contain sodium azide. Please refer to product specific (M)SDS.

References

1. Bonnekoh B, Pommer AJ, Böckelmann R, Philipsen L, Hofmeister H, Gollnick H. In-situ-topoproteome analysis of cutaneous lymphomas: perspectives of assistance for dermatohistologic diagnostics by Multi Epitope Ligand Cartography (MELC). *J Dtsch Dermatol Ges.* 2008;6:1038-51. (IHC-FS)
2. Pontes-Júnior J, Reis ST, de Oliveira LC, Sant'Anna AC, Dall'Oglio MF, Antunes AA, et al. Association between integrin expression and prognosis in localized prostate cancer. *Prostate.* 2010;70:1189-95. (IHC-PS)
3. Serru V, Le Naour F, Billard M, Azorsa DO, Lanza F, Boucheix C, et al. Selective tetraspan-integrin complexes (CD81/ α 4 β 1, CD151/ α 3 β 1, CD151/ α 6 β 1) under conditions disrupting tetraspan interactions. *Biochem J.* 1999;340:103-11. (IP)
4. Roy V, Verfaillie CM. Expression and function of cell adhesion molecules on fetal liver, cord blood and bone marrow hematopoietic progenitors: implications for anatomical localization and developmental stage specific regulation of hematopoiesis. *Exp Hematol.* 1999;27:302-12. (FC)