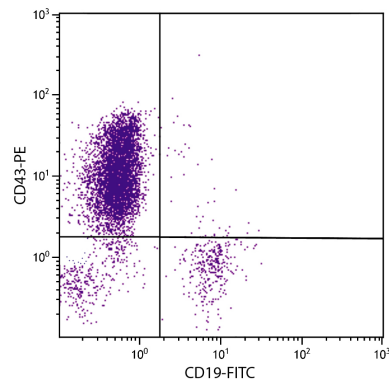




Mouse Anti-Human CD43

Cat. No.	Format	Size
9620-01	Purified (UNLB)	0.1 mg
9620-02	Fluorescein (FITC)	100 tests
9620-08	Biotin (BIOT)	100 tests
9620-09	R-phycoerythrin (PE)	100 tests
9620-11	Allophycocyanin (APC)	100 tests
9620-13	Spectral Red [®] (SPRD)	100 tests



Human peripheral blood lymphocytes were stained with Mouse Anti-Human CD43-PE (SB Cat. No. 9620-09) and Mouse Anti-Human CD19-FITC (SB Cat. No. 9340-02).

Overview

Clone	DF-T1
Isotype	Mouse IgG ₁ κ
Immunogen	KG-1 cells
Specificity	Human CD43; Mr 95-135 kDa
Alternate Name(s)	gpL115, leukocyte sialoglycoprotein
Workshop	IV w/O; V S288

Description

CD43, a member of the sialomucin family of cell surface receptors, is a 95-135 kDa type I transmembrane glycoprotein whose variability in molecular weight is dependent upon the nature of the extracellular O-glycans. It is the major sialoglycoprotein on thymocytes, T cells, and neutrophils. It is also present on activated B cells, plasma cells, NK cells, granulocytes, monocytes, macrophages, platelets, and bone marrow hematopoietic stem cells. CD43, which binds to ICAM-1 (CD54), appears to function as an anti-adhesion molecule, inhibiting T cell interactions including T cell killing, and by increasing the threshold for T cell activation.

Applications

FC – Quality tested^{1,5,6}
 IHC-FS – Reported in literature¹
 IHC-PS – Reported in literature^{1,2}
 ICC – Reported in literature¹
 IP – Reported in literature^{3,4}
 WB – Reported in literature^{1,3,5,6}
 Adhesion – Reported in literature^{3,4}

Working Dilutions

Flow Cytometry	Purified (UNLB) antibody	≤ 1 μg/10 ⁶ cells
	FITC, BIOT, PE, APC, and SPRD conjugates	10 μL/10 ⁶ cells
	For flow cytometry, the suggested use of these reagents is in a final volume of 100 μL	

Other Applications Since applications vary, you should determine the optimum working dilution for the product that is appropriate for your specific need.

For Research Use Only. Not for Diagnostic or Therapeutic Use.

Corporate Offices: 160 Oxmoor Blvd • Birmingham, AL 35209 • USA Mailing Address: P.O. Box 26221 • Birmingham, AL 35260 • USA

Tel: 205.945.1774 • U.S. and Canada: 800.722.2255 • Fax: 205.945.8768

Email: info@southernbiotech.com • Website: www.southernbiotech.com

Handling and Storage

- The purified (UNLB) antibody is supplied as 0.1 mg of purified immunoglobulin in 1.0 mL of borate buffered saline, pH 8.2. *No preservatives or amine-containing buffer salts added.* Store at 2-8°C.
- The fluorescein (FITC) conjugate is supplied as 100 tests in 1.0 mL of PBS/NaN₃. Store at 2-8°C.
- The biotin (BIOT) conjugate is supplied as 100 tests in 1.0 mL of PBS/NaN₃. Store at 2-8°C.
- The R-phycoerythrin (PE) and allophycocyanin (APC) conjugates are supplied as 100 tests in 1.0 mL of PBS/NaN₃ and a stabilizing agent. Store at 2-8°C. **Do not freeze!**
- The Spectral Red[®] (SPRD) conjugate is supplied as 100 tests in 1.0 mL of PBS/NaN₃ and a stabilizing agent. Store at 2-8°C. **Do not freeze!**
- Protect fluorochrome-conjugated forms from light. Reagents are stable for the period shown on the label if stored as directed.

Warning

Some reagents contain sodium azide. Please refer to product specific (M)SDS.

References

1. Stross WP, Warnke RA, Flavell DJ, Flavell SU, Simmons D, Gatter KC, et al. Molecule detected in formalin fixed tissue by antibodies MT1, DF-T1, and L60 (Leu-22) corresponds to CD43 antigen. *J Clin Pathol.* 1989;42:953-61. (IHC-PS, IHC-FS, ICC, WB, FC)
2. Lopez-Beltran A, Santamaria M, Garcia-Cozar FJ, Millan JM, Pena J, Molina IJ. CD43 is detected in paraffin-embedded sections of non-haemopoietic malignant tumours. In: Schlossman SF, Boumsell L, Gilks W, Harlan JM, Kishimoto T, Morimoto C, et al, editors. *Leukocyte Typing V: White Cell Differentiation Antigens.* Oxford: Oxford University Press; 1995. p. 1712-13. (IHC-PS)
3. Remold-O'Donnell E. CD43 cluster report. In: Schlossman SF, Boumsell L, Gilks W, Harlan JM, Kishimoto T, Morimoto C, et al, editors. *Leukocyte Typing V: White Cell Differentiation Antigens.* Oxford: Oxford University Press; 1995. p. 1697-1701. (IP, WB, Adhesion)
4. Axelsson B, Etemad R, Nordlund R. Biochemical and functional characterization of the workshop adhesion structure subpanel 9 (CD43) mAb. In: Schlossman SF, Boumsell L, Gilks W, Harlan JM, Kishimoto T, Morimoto C, et al, editors. *Leukocyte Typing V: White Cell Differentiation Antigens.* Oxford: Oxford University Press; 1995. p. 1708-9. (IP, Adhesion)
5. Parent D, Remold-O'Donnell E. Reactivity of mAb with CD43 isoforms. In: Schlossman SF, Boumsell L, Gilks W, Harlan JM, Kishimoto T, Morimoto C, et al, editors. *Leukocyte Typing V: White Cell Differentiation Antigens.* Oxford: Oxford University Press; 1995. p. 1701-2. (WB, FC)
6. Chorvath B, Duraj J, Mellors A, Hunakova L, Sedlak J. Cell surface leukosialin (CD43) as a substrate for *Parteurella haemolytica* O-glycoprotease. In: Schlossman SF, Boumsell L, Gilks W, Harlan JM, Kishimoto T, Morimoto C, et al, editors. *Leukocyte Typing V: White Cell Differentiation Antigens.* Oxford: Oxford University Press; 1995. p. 1705-6. (WB, FC)

Spectral Red[®] is a registered trademark of Southern Biotechnology Associates, Inc.

Spectral Red[®] is a PE/CY5 tandem conjugate.

Cy[®] is a registered trademark of GE Healthcare.