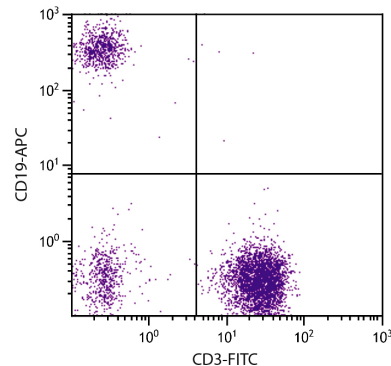




Mouse Anti-Human CD19

Cat. No.	Format	Size
9340-01	Purified (UNLB)	0.1 mg
9340-02	Fluorescein (FITC)	100 tests
9340-02S	Fluorescein (FITC)	25 tests
9340-08	Biotin (BIOT)	100 tests
9340-09	R-phycoerythrin (PE)	100 tests
9340-09S	R-phycoerythrin (PE)	25 tests
9340-10	R-phycoerythrin-Texas Red® (PE/TXRD)	100 tests
9340-11	Allophycocyanin (APC)	100 tests
9340-11S	Allophycocyanin (APC)	25 tests
9340-13	Spectral Red® (SPRD)	100 tests
9340-14	Low Endotoxin, Azide-Free (LE/AF)	0.5 mg
9340-15	Cyanine 5 (CY5)	100 tests
9340-16	R-phycoerythrin-Cyanine 5.5 (PE/CY5.5)	100 tests
9340-17	R-phycoerythrin-Cyanine 7 (PE/CY7)	100 tests
9340-18	Allophycocyanin-Cyanine 5.5 (APC/CY5.5)	100 tests
9340-19	Allophycocyanin-Cyanine 7 (APC/CY7)	100 tests
9340-26	Pacific Blue™ (PACBLU)	100 tests
9340-27	Alexa Fluor® 700 (AF700)	100 tests
9340-30	Alexa Fluor® 488 (AF488)	100 tests
9340-31	Alexa Fluor® 647 (AF647)	100 tests



Human peripheral blood lymphocytes were stained with Mouse Anti-Human CD19-APC (SB Cat. No. 9340-11) and Mouse Anti-Human CD3-FITC (SB Cat. No. 9515-02).

Overview

Clone	SJ25-C1
Isotype	Mouse (BALB/c) IgG _{1κ}
Immunogen	NALM-1 and NALM-16 leukemia cell line
Specificity	Human CD19; Mr 95 kDa
Alternate Name(s)	B4, B-lymphocyte antigen, Leu-12
Workshop	II L17; III 073, 734

Description

CD19 is a type I transmembrane glycoprotein and a member of the immunoglobulin superfamily. It is expressed at all stages of B cell differentiation except terminally differentiated plasma cells. It is also present on the cell surface of follicular dendritic cells. CD19 associates with CD21, CD81, Leu 13 and/or MHC Class II molecules to form a signal transduction complex on the B cell surface. This signaling complex modulates the activation threshold for the B cell antigen receptor (BCR).

Applications

FC – Quality tested ⁵⁻¹³
 IHC-FS – Reported in literature ¹
 IP – Reported in literature ²
 Block – Reported in literature ^{3,4}

Working Dilutions

Flow Cytometry	Purified (UNLB) antibody	≤ 1 μg/10 ⁶ cells
	FITC, BIOT, PE, PE/TXRD, APC, SPRD, CY5, PE/CY5.5, PE/CY7, APC/CY5.5, APC/CY7, PACBLU, AF488, AF647, and AF700 conjugates	10 μL/10 ⁶ cells

For flow cytometry, the suggested use of these reagents is in a final volume of 100 μL

Other Applications Since applications vary, you should determine the optimum working dilution for the product that is appropriate for your specific need.

For Research Use Only. Not for Diagnostic or Therapeutic Use.

Corporate Offices: 160 Oxmoor Blvd • Birmingham, AL 35209 • USA Mailing Address: P.O. Box 26221 • Birmingham, AL 35260 • USA

Tel: 205.945.1774 • U.S. and Canada: 800.722.2255 • Fax: 205.945.8768

Email: info@southernbiotech.com • Website: www.southernbiotech.com

Handling and Storage

- The purified (UNLB) antibody is supplied as 0.1 mg of purified immunoglobulin in 1.0 mL of borate buffered saline, pH 8.2. *No preservatives or amine-containing buffer salts added.* Store at 2-8°C.
- The fluorescein (FITC) conjugate is supplied as 25 tests in 0.25 mL or 100 tests in 1.0 mL of PBS/NaN₃. Store at 2-8°C.
- The biotin (BIOT) conjugate is supplied as 100 tests in 1.0 mL of PBS/NaN₃. Store at 2-8°C.
- The R-phycoerythrin (PE) and allophycocyanin (APC) conjugates are supplied as 25 tests in 0.25 mL or 100 tests in 1.0 mL of PBS/NaN₃ and a stabilizing agent. Store at 2-8°C. **Do not freeze!**
- The Spectral Red® (SPRD), R-phycoerythrin-Texas Red® (PE/TXRD), R-phycoerythrin-Cyanine 5.5 (PE/CY5.5), R-phycoerythrin-Cyanine 7 (PE/CY7), allophycocyanin-Cyanine 5.5 (APC/CY5.5), and allophycocyanin-Cyanine 7 (APC/CY7) conjugates are supplied as 100 tests in 1.0 mL of PBS/NaN₃ and a stabilizing agent. Store at 2-8°C. **Do not freeze!**
- The low endotoxin, azide-free (LE/AF) antibody is supplied as 0.5 mg purified immunoglobulin in 1.0 mL of PBS. Contains no preservative; handle under aseptic conditions. Store at 2-8°C or aliquot into smaller volumes and store at -20°C. Avoid multiple freeze / thaw cycles.
- The Alexa Fluor® 488 (AF488), Alexa Fluor® 647 (AF647), Alexa Fluor® 700 (AF700), Cyanine 5 (CY5), and Pacific Blue™ (PACBLU) conjugates are supplied as 100 tests in 1.0 mL of PBS/NaN₃. Store at 2-8°C.
- Protect fluorochrome conjugated forms from light. Reagents are stable for the period shown on the label if stored as directed.

Warning

Some reagents contain sodium azide. Please refer to product specific SDS.

References

1. Vuyyuru R, Liu H, Manser T, Alugupalli KR. Characteristics of *Borrelia hermsii* infection in human hematopoietic stem cell-engrafted mice mirror those of human relapsing fever. *Proc Natl Acad Sci USA*. 2011;108:20707-12. (IHC-FS)
2. Nadler LM. B cell/leukemia panel workshop: summary and comments. In: Reinherz EL, Haynes BF, Nadler LM, Bernstein ID, editors. *Leukocyte Typing II: Human B Lymphocytes*. New York: Springer-Verlag; 1986. p. 3-43. (IP)
3. Moldenhauer G, Dörken B, Schwartz R, Pezzutto A, Knops J, Hämmerling GJ. Analysis of ten B lymphocyte-specific workshop monoclonal antibodies. In: Reinherz EL, Haynes BF, Nadler LM, Bernstein ID, editors. *Leukocyte Typing II: Human B Lymphocytes*. New York: Springer-Verlag; 1986. p. 61-7. (Block)
4. de Rie MA, Terpstra FG, van Lier RA, von dem Borne AE, Miedema F. Identification of functional epitopes on workshop-defined B-cell membrane molecules. In: McMichael AJ, Beverley PC, Cobbold S, Crumpton MJ, Gilks W, Gotch FM, et al, editors. *Leukocyte Typing III: White Cell Differentiation Antigens*. Oxford: Oxford University Press; 1987. p. 402-5. (Block)
5. Odendahl M, Jacobi A, Hansen A, Feist E, Hiepe F, Burmester GR, et al. Disturbed peripheral B lymphocyte homeostasis in systemic lupus erythematosus. *J Immunol*. 2000;165:5970-9. (FC)
6. Odendahl M, Keitzer R, Wahn U, Hiepe F, Radbruch A, Dörner T, et al. Perturbations of peripheral B lymphocyte homeostasis in children with systemic lupus erythematosus. *Ann Rheum Dis*. 2003;62:851-8. (FC)
7. Henneken M, Dörner T, Burmester G, Berek C. Differential expression of chemokine receptors on peripheral blood B cells from patients with rheumatoid arthritis and systemic lupus erythematosus. *Arthritis Res Ther*. 2005;7:R1001-13. (FC)
8. Shankar SP, Petrie TA, García AJ, Babensee JE. Dendritic cell responses to self-assembled monolayers of defined chemistries. *J Biomed Mater Res A*. 2010;92:1487-99. (FC)
9. Shankar SP, Babensee JE. Comparative characterization of cultures of primary human macrophages or dendritic cells relevant to biomaterial studies. *J Biomed Mater Res A*. 2010;92:791-800. (FC)
10. Chung BH, Kim KW, Sun IO, Choi SR, Park HS, Jeon EJ, et al. Increased interleukin-17 producing effector memory T cells in the end-stage renal disease patients. *Immunol Lett*. 2011;141:181-9. (FC)
11. Kim KW, Chung BH, Jeon EJ, Kim B, Choi BS, Park CW, et al. B cell-associated immune profiles in patients with end-stage renal disease (ESRD). *Exp Mol Med*. 2012;44:465-72. (FC)
12. Kim HY, Cho M, Jhun JY, Byun JK, Kim E, Yim YB, et al. The imbalance of T helper 17/regulatory T cells and memory B cells during the early post-transplantation period in peripheral blood of living donor liver transplantation recipients. *Immunology*. 2013;138:124-33. (FC)
13. Chung BH, Kim KW, Yu JH, Kim B, Choi BS, Park CW, et al. Decrease of immature B cell and interleukin-10 during early-post-transplant period in renal transplant recipients under tacrolimus based immunosuppression. *Transpl Immunol*. 2014;30:159-67. (FC)

Texas Red® is a registered trademark of Molecular Probes, Inc.

Spectral Red® is a registered trademark of Southern Biotechnology Associates, Inc.

Spectral Red® is a PE/CY5 tandem conjugate.

Cy™ is a trademark of Cytiva or one of its subsidiaries.

Alexa Fluor® 488, 647, 700 and Pacific Blue™ are provided under an agreement between Molecular Probes, Inc. (a wholly owned subsidiary of Invitrogen Corporation), and Southern Biotechnology Associates, Inc., and the manufacture, use, sale or import of this product may be subject to one or more U.S. patents, pending applications, and corresponding non-U.S. equivalents, owned by Molecular Probes, Inc. The purchase of this product conveys to the buyer the non-transferable right to use the purchased amount of the product and components of the product in research conducted by the buyer (whether the buyer is an academic or for-profit entity). The buyer cannot sell or otherwise transfer (a) this product (b) its components or (c) materials made using this product or its components to a third party or otherwise use this product or its components or materials made using this product or its components for Commercial Purposes. Commercial Purposes means any activity by a party for consideration and may include, but is not limited to: (1) use of the product or its components in manufacturing; (2) use of the product or its components to provide a service, information, or data; (3) use of the product or its components for therapeutic, diagnostic or prophylactic purposes; or (4) resale of the product or its components, whether or not such product or its components are resold for use in research. For information on purchasing a license to this product for any other use, contact Molecular Probes, Inc., Business Development, 29851 Willow Creek Road, Eugene, OR 97402, USA, Tel: (541) 465-8300. Fax: (541) 335-0504.

TB9340
08-Oct-21

Corporate Offices: 160 Oxmoor Blvd • Birmingham, AL 35209 • USA **Mailing Address:** P.O. Box 26221 • Birmingham, AL 35260 • USA

Tel: 205.945.1774 • U.S. and Canada: 800.722.2255 • **Fax:** 205.945.8768

Email: info@southernbiotech.com • **Website:** www.southernbiotech.com