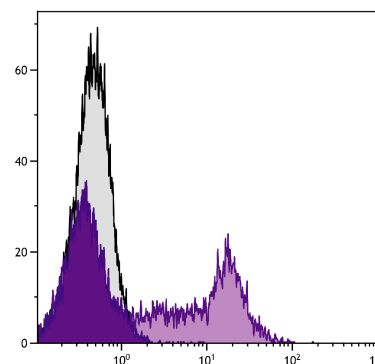




Mouse Anti-Chicken ChT1

Cat. No.	Format	Size
8410-01	Purified (UNLB)	0.5 mg
8410-02	Fluorescein (FITC)	0.5 mg
8410-08	Biotin (BIOT)	0.5 mg
8410-09	R-phycoerythrin (PE)	0.1 mg



Chick thymocytes were stained with Mouse Anti-Chicken ChT1-FITC (SB Cat. No. 8410-02).

Overview

Clone	CT1
Isotype	Mouse IgG ₁ κ
Immunogen	Chicken thymocytes
Specificity	Chicken/Quail ChT1; Mr 63 & 103 kDa
Alternate Name(s)	Chicken thymocyte receptor, chicken T cell thymocyte Ag 1

Description

ChT1, a member of the Ig superfamily with one V-like and one C2-like domain, is a T cell antigen that is expressed on the surface of embryonic thymocytes (day 10). In young chickens about 90% of the thymocytes as well as a subpopulation of peripheral lymphocytes, which represent recent thymic emigrants are ChT1 positive. Expression in the periphery declines with age and, in correlation with partial thymectomy, indicates that ChT1 can be used as an accurate marker for studying thymic function. The monoclonal antibody CT1 also recognizes the ChT1 antigen in quail cortical thymocytes.

Applications

FC – Quality tested ¹⁻⁴
 IP – Reported in literature ¹

Working Dilutions

Flow Cytometry	Purified (UNLB) antibody	≤ 1 μg/10 ⁶ cells
	FITC and BIOT conjugates	≤ 1 μg/10 ⁶ cells
	PE conjugate	≤ 0.2 μg/10 ⁶ cells
	For flow cytometry, the suggested use of these reagents is in a final volume of 100 μL	

Other Applications Since applications vary, you should determine the optimum working dilution for the product that is appropriate for your specific need.

For Research Use Only. Not for Diagnostic or Therapeutic Use.

Handling and Storage

- The purified (UNLB) antibody is supplied as 0.5 mg of purified immunoglobulin in 1.0 mL of borate buffered saline, pH 8.2. *No preservatives or amine-containing buffer salts added.* Store at 2-8°C.
- The fluorescein (FITC) conjugate is supplied as 0.5 mg in 1.0 mL of PBS/NaN₃. Store at 2-8°C.
- The biotin (BIOT) conjugate is supplied as 0.5 mg in 1.0 mL of PBS/NaN₃. Store at 2-8°C.
- The R-phycoerythrin (PE) conjugate is supplied as 0.1 mg in 1.0 mL of PBS/NaN₃ and a stabilizing agent. Store at 2-8°C. **Do not freeze!**
- Protect fluorochrome-conjugated forms from light. Reagents are stable for the period shown on the label if stored as directed.

Warning

Some reagents contain sodium azide. Please refer to product specific SDS.

References

1. Chen CH, Chanh TC, Cooper MD. Chicken thymocyte-specific antigen identified by monoclonal antibodies: ontogeny, tissue distribution and biochemical characterization. *Eur J Immunol.* 1984;14:385-91. (Immunogen, FC, IP, Quail Reactivity)
2. Hemendinger RA, Bloom SE. Selective mitomycin C and cyclophosphamide induction of apoptosis in differentiating B lymphocytes compared to T lymphocytes in vivo. *Immunopharmacology.* 1996;35:71-82. (FC)
3. Kong F, Chen CH, Cooper MD. Thymic function can be accurately monitored by the level of recent T cell emigrants in the circulation. *Immunity.* 1998;8:97-104. (FC)
4. Rudrappa SG, Humphrey BD. Energy metabolism in developing chicken lymphocytes is altered during the embryonic to posthatch transition. *J Nutr.* 2007;137:427-32. (FC)