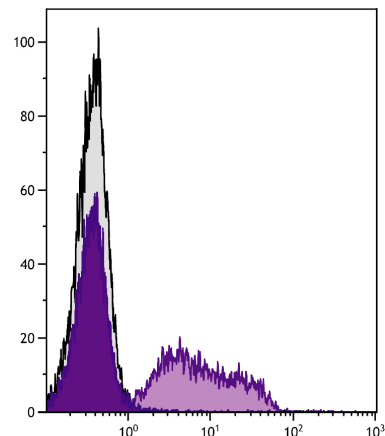




## Mouse Anti-Rabbit RLA-DR

Cat. No.	Format	Size
4070-01	Purified (UNLB)	0.5 mg
4070-02	Fluorescein (FITC)	0.5 mg
4070-08	Biotin (BIOT)	0.5 mg
4070-09	R-phycoerythrin (PE)	0.1 mg



Rabbit peripheral blood lymphocytes were stained with Mouse Anti-Rabbit RLA-DR-PE (SB Cat. No. 4070-09).

### Overview

<b>Clone</b>	RDR34
<b>Isotype</b>	Mouse (BALB/c) IgG <sub>2b</sub> κ
<b>Immunogen</b>	Rabbit leukemic B cell line
<b>Specificity</b>	Rabbit RLA-DR
<b>Alternate Name(s)</b>	MHC Class II, leukocyte antigen

### Description

The monoclonal antibody RDR34 reacts with RLA-DR-transfected cells but not with RLA-DQ-transfected cells. In normal adult rabbits, the antibody reacts with 50-60% of peripheral blood leukocytes and splenocytes. It has also been reported that the antibody stains lymphocytes in the thymic medulla and some cells in the cortex, periportal cells in the liver, and synovial lining cells (e.g., infiltrating macrophages) in inflamed synovium. DRα transcripts have been detected in appendix, bone marrow, spleen, and to a lesser extent in lymph nodes, lung, liver, and other organs.

### Applications

FC – Quality tested <sup>1,2</sup>  
 IHC-FS – Reported in literature <sup>3-5</sup>  
 IHC-WM – Reported in literature <sup>6</sup>  
 IP – Reported in literature <sup>1</sup>

### Working Dilutions

<b>Flow Cytometry</b>	FITC and BIOT conjugates	≤ 1 μg/10 <sup>6</sup> cells
	PE conjugate	≤ 0.2 μg/10 <sup>6</sup> cells
For flow cytometry, the suggested use of these reagents is in a final volume of 100 μL		

**Other Applications** Since applications vary, you should determine the optimum working dilution for the product that is appropriate for your specific need.

**For Research Use Only. Not for Diagnostic or Therapeutic Use.**

Corporate Offices: 160 Oxmoor Blvd • Birmingham, AL 35209 • USA Mailing Address: P.O. Box 26221 • Birmingham, AL 35260 • USA

Tel: 205.945.1774 • U.S. and Canada: 800.722.2255 • Fax: 205.945.8768

Email: [info@southernbiotech.com](mailto:info@southernbiotech.com) • Website: [www.southernbiotech.com](http://www.southernbiotech.com)

## Handling and Storage

---

- The purified (UNLB) antibody is supplied as 0.5 mg of purified immunoglobulin in 1.0 mL of borate buffered saline, pH 8.2. *No preservatives or amine-containing buffer salts added.* Store at 2-8°C.
- The fluorescein (FITC) conjugate is supplied as 0.5 mg in 1.0 mL of PBS/NaN<sub>3</sub>. Store at 2-8°C.
- The biotin (BIOT) conjugate is supplied as 0.5 mg in 1.0 mL of PBS/NaN<sub>3</sub>. Store at 2-8°C.
- The R-phycoerythrin (PE) conjugate is supplied as 0.1 mg in 1.0 mL of PBS/NaN<sub>3</sub> and a stabilizing agent. Store at 2-8°C. **Do not freeze!**
- Protect fluorochrome-conjugated forms from light. Reagents are stable for the period shown on the label if stored as directed.

## Warning

---

Some reagents contain sodium azide. Please refer to product specific SDS.

## References

---

1. Spieker-Polet H, Sittisombut N, Yam P, Knight KL. Rabbit major histocompatibility complex. IV. Expression of major histocompatibility complex class II genes. *J Immunogenet.* 1990;17:123-32. (Immunogen, FC, IP)
2. Sawasdikosol S, Hague BF, Zhao TM, Bowers FS, Simpson RM, Robinson M, et al. Selection of rabbit CD4<sup>+</sup>CD8<sup>+</sup> T cell receptor- $\gamma/\delta$  cells by in vitro transformation with human T lymphotropic virus-I. *J Exp Med.* 1993;178:1337-45. (FC)
3. Wilkinson JM, McDonald G, Smith S, Galea-Lauri J, Lewthwaite J, Henderson B, et al. Immunohistochemical identification of leucocyte populations in normal tissue and inflamed synovium of the rabbit. *J Pathol.* 1993;170:315-20. (IHC-FS)
4. Vinuesa M, Bassan N, Roma S, Pérez F. Immunopathological modifications in the rectal mucosa from an animal model of food allergy. *Rev Esp Enferm Dig.* 2005;97:629-36. (IHC-FS)
5. Brignole-Baudouin F, Desbenoit N, Hamm G, Liang H, Both J, Brunelle A, et al. A new safety concern for glaucoma treatment demonstrated by mass spectrometry imaging of benzalkonium chloride distribution in the eye, an experimental study in rabbits. *PLoS One.* 2012;7(11):e50180. (IHC-FS)
6. Huang W, Chamberlain CG, Sarafian RY, Chan-Ling T. MHC class II expression by  $\beta_2$  integrin (CD18)-positive microglia, macrophages and macrophage-like cells in rabbit retina. *Neuron Glia Biol.* 2008;4:285-94. (IHC-WM)