

**EGFR / HER1 / ErbB1 Antibody (PE),  
Rabbit MAb**

Catalog Number: 10001-RE01-P

EliteRmab® is a registered trademark of Sino Biological Inc.

**GENERAL INFORMATION**

|                           |   |
|---------------------------|---|
| <b>Immunogen:</b>         | Recombinant Human EGFR Protein (Catalog#10001-H08H)   |
| <b>Reagents:</b>          | PE-conjugated Rabbit monoclonal antibody  |
| <b>Preparation</b>        | This antibody was obtained from a rabbit immunized with purified, recombinant Human EGFR / HER1 / ErbB1 (rh EGFR / HER1 / ErbB1; Catalog#10001-H08H; NP_005219; Met 1-Ser 645) and conjugated with PE under optimum conditions, the unreacted PE was removed. |
| <b>Ig Type:</b>           | Rabbit IgG  |
| <b>Clone ID:</b>          | E01   |
| <b>Specificity:</b>       | Human EGFR / HER1 / ErbB1   |
| <b>Concentration:</b>     | 1 µl/Test, 0.1 mg/ml  |
| <b>Formulation:</b>       | PBS solution containing 0.5% BSA and 0.03%ProClin300  |
| <b>Storage:</b>           | This antibody can be stored at 2°C-8°C for twelve months without detectable loss of activity. Protected from prolonged exposure to light. Do not freeze !   |
| <b>Alternative Names:</b> | EGFR  |

**APPLICATIONS**

|                      |     |
|----------------------|-----|
| <b>Applications:</b> | FCM |
|----------------------|-----|

**RECOMMENDED CONCENTRATION***Please Note: Optimal concentrations/dilutions should be determined by the end user.***For Research Use Only. Not for use in diagnostic or therapeutic procedures.**

Tel: +86-400-890-9989 (Global), +1-215-583-7898 (USA), +49(0)6196 9678656 (Europe)

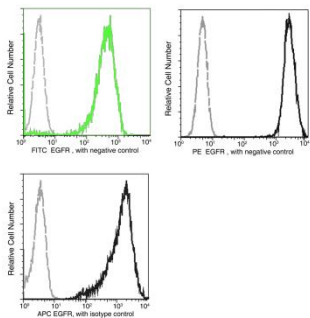
Website: <http://www.sinobiological.com>

# EGFR / HER1 / ErbB1 Antibody (PE), Rabbit MAb



Catalog Number: 10001-RE01-P

EliteRmab® is a registered trademark of Sino Biological Inc.



Profile of anti-EGFR reactivity on A431 cells  
analyzed by flow cytometry.

Flow cytometry was performed on a BD  
FACSCalibur flow cytometry system.

Please refer to [www.sinobiological.com/Flow-Cytometry-FACS-Protocols-a-750.html](http://www.sinobiological.com/Flow-Cytometry-FACS-Protocols-a-750.html) for  
technical protocols.

**For Research Use Only. Not for use in diagnostic or therapeutic procedures.**

**Tel: +86-400-890-9989 (Global), +1-215-583-7898 (USA), +49(0)6196 9678656 (Europe)**

**Website: <http://www.sinobiological.com>**