

**EGFR / HER1 / ErbB1 Antibody (FITC),
Rabbit MAb**

Catalog Number: 10001-RE01-F

EliteRmab® is a registered trademark of Sino Biological Inc.

GENERAL INFORMATION

Immunogen:	Recombinant Human EGFR Protein (Catalog#10001-H08H)
Reagents:	FITC-conjugated Rabbit monoclonal antibody
Preparation	This antibody was obtained from a rabbit immunized with purified, recombinant Human EGFR / HER1 / ErbB1 (rh EGFR / HER1 / ErbB1; Catalog#10001-H08H; NP_005219; Met 1-Ser 645) and conjugated with FITC under optimum conditions, the unreacted FITC was removed.
Ig Type:	Rabbit IgG
Clone ID:	E01
Specificity:	Human EGFR / HER1 / ErbB1
Concentration:	5 µl/Test, 0.1 mg/ml
Formulation:	PBS solution containing 0.5% BSA and 0.09% sodium azide
Storage:	This antibody can be stored at 2°C-8°C for twelve months without detectable loss of activity. Protected from prolonged exposure to light. Do not freeze ! Sodium azide is toxic to cells and should be disposed of properly. Flush with large volumes of water during disposal.
Alternative Names:	EGFR

APPLICATIONS

Applications:	FCM
----------------------	-----

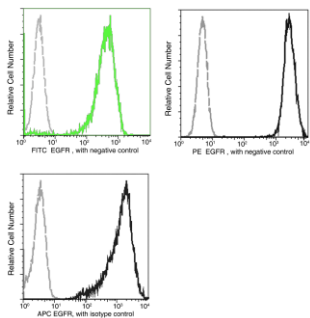
RECOMMENDED CONCENTRATION*Please Note: Optimal concentrations/dilutions should be determined by the end user.*

EGFR / HER1 / ErbB1 Antibody (FITC), Rabbit MAb



Catalog Number: 10001-RE01-F

EliteRmab® is a registered trademark of Sino Biological Inc.



Profile of anti-EGFR reactivity on A431 cells
analyzed by flow cytometry.

Flow cytometry was performed on a BD
FACSCalibur flow cytometry system.
Please refer to www.sinobiological.com/Flow-Cytometry-FACS-Protocols-a-750.html for
technical protocols.