

EGFR / HER1 / ErbB1 Antibody (FITC), Mouse MAb



Sino Biological
Biological Solution Specialist

Catalog Number: 10001-MM08-F

GENERAL INFORMATION

Immunogen:	Recombinant Human EGFR / HER1 / ErbB1 protein (Catalog#10001-H08H)
Reagents:	FITC-conjugated Mouse monoclonal antibody
Preparation	This antibody was produced from a hybridoma resulting from the fusion of a mouse myeloma with B cells obtained from a mouse immunized with purified, recombinant Human EGFR / HER1 / ErbB1 (rh EGFR / HER1 / ErbB1; Catalog#10001-H08H; NP_005219; Met 1-Ser 645) and conjugated with FITC under optimum conditions, the unreacted FITC was removed.
Ig Type:	Mouse IgG1
Clone ID:	08
Specificity:	Human EGFR / HER1 / ErbB1
Concentration:	1 µl/Test, 0.1 mg/ml
Formulation:	PBS solution containing 0.5% BSA and 0.09% sodium azide
Storage:	This antibody can be stored at 2°C-8°C for twelve months without detectable loss of activity. Protected from prolonged exposure to light. Do not freeze ! Sodium azide is toxic to cells and should be disposed of properly. Flush with large volumes of water during disposal.
Alternative Names:	EGFR

APPLICATIONS

Applications: FCM

RECOMMENDED CONCENTRATION

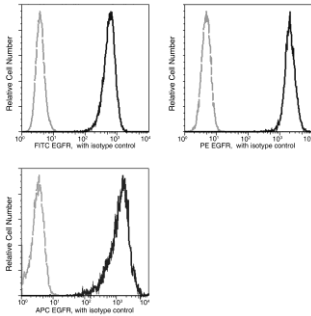
Please Note: Optimal concentrations/dilutions should be determined by the end user.

EGFR / HER1 / ErbB1 Antibody (FITC), Mouse MAb



Sino Biological
Biological Solution Specialist

Catalog Number: 10001-MM08-F



Flow cytometric analysis of EGFR expression
on human A431 cells.

Flow cytometry was performed on a BD
FACSCalibur flow cytometry system.
Please refer to www.sinobiological.com/Flow-Cytometry-FACS-Protocols-a-750.html for
technical protocols.