

Mouse Cd1d1 & B2M Heterodimer Protein



Sino Biological
Biological Solution Specialist

Catalog Number: CT070-M08H

General Information

Gene Name Synonym:

Cd1d1 & B2M

Protein Construction:

A DNA sequence encoding mouse Cd1d1 (NP_031665.2) (Met1-Ser297) was fused with a polyhistidine tag at the C-terminus, constructed the plasmid 1; A DNA sequence encoding the mouse B2M (P01887) (Met1-Met119) constructed the plasmid 2. The two plasmids were co-expressed and the mouse Cd1d1/B2M heterodimer was purified.

Source: Mouse

Expression Host: HEK293 Cells

QC Testing

Purity: > (67.8+31.4) % as determined by SDS-PAGE

Endotoxin:

< 1.0 EU per µg protein as determined by the LAL method.

Stability:

Samples are stable for up to twelve months from date of receipt at -70 °C

Predicted N terminal: Gln 22 & Ile 21

Molecular Mass:

The recombinant heterodimer of mouse Cd1d1/B2M comprises 394 (295+99) amino acids and has a calculated molecular mass of 45.4 (33.7+11.7) KDa.

Formulation:

Lyophilized from sterile PBS, pH 7.4.

Normally 5 % - 8 % trehalose, mannitol and 0.01% Tween80 are added as protectants before lyophilization. Specific concentrations are included in the hardcopy of COA. Please contact us for any concerns or special requirements.

Usage Guide

Storage:

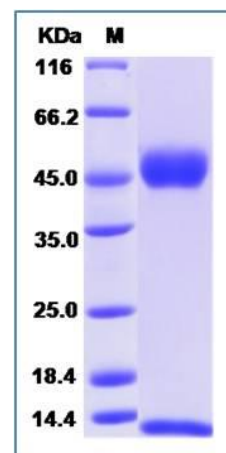
Store it under sterile conditions at -20°C to -80°C upon receiving. Recommend to aliquot the protein into smaller quantities for optimal storage.

Avoid repeated freeze-thaw cycles.

Reconstitution:

Detailed reconstitution instructions are sent along with the products.

SDS-PAGE:



Manufactured By Sino Biological Inc., FOR RESEARCH USE ONLY. NOT FOR USE IN HUMANS.

For US Customer: Fax: 267-657-0217 • Tel: 215-583-7898

Global Customer: Fax :+86-10-5862-8288 • Tel:+86-400-890-9989 • <http://www.sinobiological.com>