

PEDF/Serp1F1 Antibody, Rabbit PAb, Antigen Affinity Purified



Sino Biological
Biological Solution Specialist

Catalog Number: 80481-T44

GENERAL INFORMATION

Immunogen:	Recombinant Rat PEDF/Serp1F1 Protein (Catalog#80481-R08H)
Preparation	Produced in rabbits immunized with purified, recombinant Rat PEDF/Serp1F1 (rR PEDF/Serp1F1; Catalog#80481-R08H; NP_808788.1; Met1-Thr418). PEDF/Serp1F1 specific IgG was purified by Rat PEDF/Serp1F1 affinity chromatography.
Ig Type:	Rabbit IgG
Specificity:	Rat PEDF/Serp1F1
Formulation:	0.2 µm filtered solution in PBS
Storage:	This antibody can be stored at 2°C-8°C for one month without detectable loss of activity. Antibody products are stable for twelve months from date of receipt when stored at -20°C to -80°C. Preservative-Free. Sodium azide is recommended to avoid contamination (final concentration 0.05%-0.1%). It is toxic to cells and should be disposed of properly. Avoid repeated freeze-thaw cycles.

APPLICATIONS

Applications:	WB,IHC-P,IP
----------------------	-------------

RECOMMENDED CONCENTRATION

IHC-P	IHC-P: 1:500-1:2000
Western Blot	WB: 1:500-1:2000
Immunoprecipitation	IP: 1-5 µL/mg of lysate

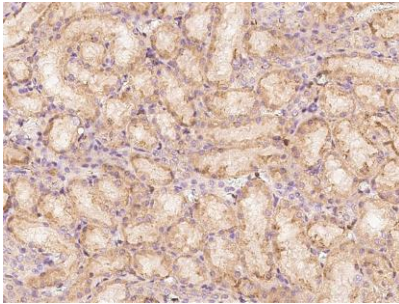
Please Note: Optimal concentrations/dilutions should be determined by the end user.

PEDF/Serp1F1 Antibody, Rabbit PAb, Antigen Affinity Purified

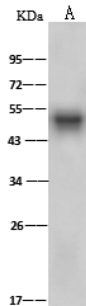


Sino Biological
Biological Solution Specialist

Catalog Number: 80481-T44



Immunohistochemical staining of rat SERPINF1 in rat kidney with rabbit polyclonal antibody at 1:1000 dilution, formalin-fixed paraffin embedded sections.

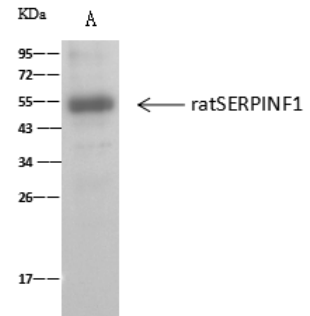


Anti-SERPINF1 rabbit polyclonal antibody at 1:500 dilution
Lane A: Rat spleen tissue lysate

Lysates/proteins at 30 µg per lane.
Secondary
Goat Anti-Rabbit IgG (H+L)/HRP at 1/10000 dilution.

Developed using the ECL technique.
Performed under reducing conditions.

Predicted band size: 46 kDa
Observed band size: 49 kDa



ratSERPINF1 was immunoprecipitated using:
Lane A: 0.5 mg A549 Whole Cell Lysate

2 µL anti-ratSERPINF1 rabbit polyclonal antibody and 60 µg of Immunomagnetic beads Protein A/G.

Primary antibody:
Anti-ratSERPINF1 rabbit polyclonal antibody, at 1:100 dilution

Secondary antibody:
Clean-Blot IP Detection Reagent (HRP) at 1:1000 dilution

Developed using the ECL technique.
Performed under reducing conditions.

Predicted band size: 46 kDa
Observed band size: 52 kDa