

PD1/PDCD1/CD279 Antibody, Rabbit PAb, Antigen Affinity Purified



Sino Biological
Biological Solution Specialist

Catalog Number: 70109-T20

GENERAL INFORMATION

Immunogen:	Recombinant Canine PD1/PDCD1/CD279 Protein (Catalog#70109-D08H)
Preparation	Produced in rabbits immunized with purified, recombinant Canine PD1/PDCD1/CD279 (Catalog#70109-D08H; XP_543338.3; Met1-Leu169). PD1/PDCD1/CD279 specific IgG was purified by Canine PD1/PDCD1/CD279 affinity chromatography.
Ig Type:	Rabbit IgG
Specificity:	Canine PD1/PDCD1/CD279
Formulation:	0.2 µm filtered solution in PBS
Storage:	This antibody can be stored at 2°C-8°C for one month without detectable loss of activity. Antibody products are stable for twelve months from date of receipt when stored at -20°C to -80°C. Preservative-Free. Sodium azide is recommended to avoid contamination (final concentration 0.05%-0.1%). It is toxic to cells and should be disposed of properly. Avoid repeated freeze-thaw cycles.

APPLICATIONS

Applications:	ELISA,IP
----------------------	----------

RECOMMENDED CONCENTRATION

Immunoprecipitation	IP:0.5-2 µL/mg of lysate
ELISA	ELISA: 1:5000-1:10000 This antibody can be used at 1:5000-1:10000 with the appropriate secondary reagents to detect Canine PD1/PDCD1/CD279.

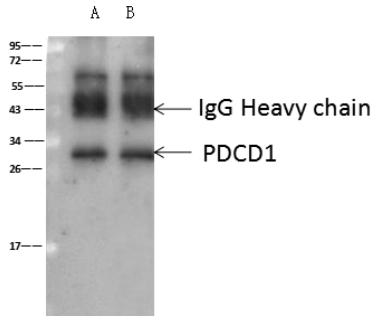
Please Note: Optimal concentrations/dilutions should be determined by the end user.

PD1/PDCD1/CD279 Antibody, Rabbit PAb, Antigen Affinity Purified



Sino Biological
Biological Solution Specialist

Catalog Number: 70109-T20



PDCD1 was immunoprecipitated using:
Lane A: 0.5 mg Jurkat Whole Cell Lysate
Lane B: 0.5 mg HeLa Whole Cell Lysate

4 μ L anti-PDCD1 rabbit polyclonal antibody
and 60 μ g of Immunomagnetic beads Protein
A/G.

Primary antibody:
Anti-PDCD1 rabbit polyclonal antibody, at
1:100 dilution

Secondary antibody:
Goat Anti-Rabbit IgG (H+L)/HRP at 1/10000
dilution

Developed using the ECL technique.
Performed under reducing conditions.

Predicted band size: 31 kDa
Observed band size: 31 kDa