

Canine IL22RA1 / IL22R Protein (Fc Tag)



Sino Biological
Biological Solution Specialist

Catalog Number: 70083-D02H

General Information

Gene Name Synonym:

IL22RA1

Protein Construction:

A DNA sequence encoding the canine IL22RA1 (XP_855113.2) (Met1-Thr226) was expressed with the Fc region of human IgG1 at the C-terminus.

Source: Canine

Expression Host: HEK293 Cells

QC Testing

Purity: > 85 % as determined by SDS-PAGE

Endotoxin:

< 1.0 EU per µg of the protein as determined by the LAL method

Stability:

Samples are stable for up to twelve months from date of receipt at -70 °C

Predicted N terminal: Ala 15

Molecular Mass:

The recombinant canine IL22RA1/Fc is a disulfide-linked homodimer. The reduced monomer comprises 453 amino acids and has a predicted molecular mass of 51.2 kDa. The apparent molecular mass of the protein is approximately 56 kDa in SDS-PAGE under reducing conditions.

Formulation:

Lyophilized from sterile PBS, pH 7.4.

Normally 5 % - 8 % trehalose, mannitol and 0.01% Tween80 are added as protectants before lyophilization. Specific concentrations are included in the hardcopy of COA. Please contact us for any concerns or special requirements.

Usage Guide

Storage:

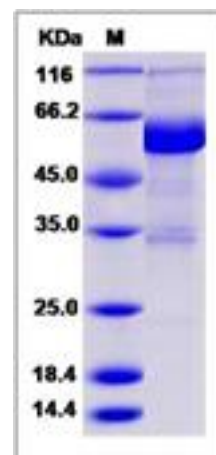
Store it under sterile conditions at -20°C to -80°C upon receiving. Recommend to aliquot the protein into smaller quantities for optimal storage.

Avoid repeated freeze-thaw cycles.

Reconstitution:

Detailed reconstitution instructions are sent along with the products.

SDS-PAGE:



Protein Description

IL-22R belongs to the type II cytokine receptor family. It contains 2 fibronectin type-III domains and is expressed in colon, liver, lung, pancreas and kidney. IL-22R also can be expressed in keratinocytes of normal skin as well as in psoriatic skin lesion. Overexpression of IL-22R can be detected in synovial fluid cells from rheumatoid arthritis and spondyloarthritis patients. IL-22R is a component of the receptor for IL20, IL22 and IL24. The component of IL-22R formed by IL22RA1 and IL10RB enables IL22 signaling via JAK/STAT pathways. IL22 also induces activation of MAPK1/MAPK3 and Akt kinases pathways. Component of one of the receptor for IL20 and IL24 formed by IL22RA1 and IL20RB also signaling through STATs activation. IL-22R mediates IL24 antiangiogenic activity as well as IL24 inhibitory effect on endothelial cell tube formation and differentiation.

References

- 1.Xie MH, et al. (2000) Interleukin (IL)-22, a novel human cytokine that signals through the interferon receptor-related proteins CRF2-4 and IL-22R. *J Biol Chem.* 275(40):31335-9.
- 2.Xu W, et al. (2001) A soluble class II cytokine receptor, IL-22RA2, is a naturally occurring IL-22 antagonist. *Proc Natl Acad Sci.* 98(17):9511-6.
- 3.Wu PW, et al. (2008) IL-22R, IL-10R2, and IL-22BP binding sites are topologically juxtaposed on adjacent and overlapping surfaces of IL-22. *J Mol Biol.* 382(5):1168-83.

Manufactured By Sino Biological Inc., FOR RESEARCH USE ONLY. NOT FOR USE IN HUMANS.

For US Customer: Fax: 267-657-0217

• Tel: 215-583-7898

Global Customer: Fax :+86-10-5862-8288

• Tel:+86-400-890-9989

• <http://www.sinobiological.com>