

Blomia tropicalis Blot2 Protein (His Tag)



Sino Biological
Biological Solution Specialist

Catalog Number: 69062-A08H

General Information

Gene Name Synonym:

BLOT2

Protein Construction:

Source: Blomia tropicalis

Expression Host: HEK293 Cells

QC Testing

Purity: > 95 % as determined by SDS-PAGE.

Endotoxin:

< 1.0 EU per µg protein as determined by the LAL method.

Stability:

Samples are stable for up to twelve months from date of receipt at -70 °C

Predicted N terminal: Gly 19

Molecular Mass:

The recombinant BLOT2 consists of 137 amino acids and predicts a molecular mass of 15 kDa.

Formulation:

Lyophilized from sterile PBS, pH 7.4.

Normally 5 % - 8 % trehalose, mannitol and 0.01% Tween80 are added as protectants before lyophilization. Specific concentrations are included in the hardcopy of COA. Please contact us for any concerns or special requirements.

Usage Guide

Storage:

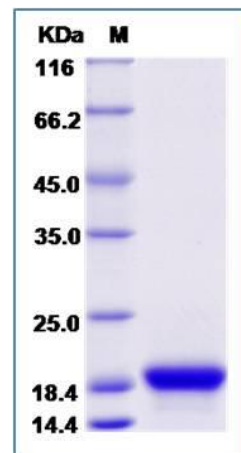
Store it under sterile conditions at -20°C to -80°C upon receiving. Recommend to aliquot the protein into smaller quantities for optimal storage.

Avoid repeated freeze-thaw cycles.

Reconstitution:

Detailed reconstitution instructions are sent along with the products.

SDS-PAGE:



Manufactured By Sino Biological Inc., FOR RESEARCH USE ONLY. NOT FOR USE IN HUMANS.

For US Customer: Fax: 267-657-0217 • Tel: 215-583-7898

Global Customer: Fax :+86-10-5862-8288 • Tel:+86-400-890-9989 • <http://www.sinobiological.com>