

APLP1 / Amyloid-like protein 1 Antibody, Rabbit PAb, Antigen Affinity Purified

Catalog Number: 51730-T24



Sino Biological
Biological Solution Specialist

GENERAL INFORMATION

Immunogen:	Recombinant Mouse APLP1 / Amyloid-like protein 1 Protein (Catalog#51730-M08H)
Preparation	Produced in rabbits immunized with purified, recombinant Mouse APLP1 / Amyloid-like protein 1 (rM APLP1 / Amyloid-like protein 1; Catalog#51730-M08H; NP_031493.2; Met1-Glu584). APLP1 / Amyloid-like protein 1 specific IgG was purified by Mouse APLP1 / Amyloid-like protein 1 affinity chromatography.
Ig Type:	Rabbit IgG
Specificity:	Mouse APLP1 / Amyloid-like protein 1
Formulation:	0.2 µm filtered solution in PBS
Storage:	This antibody can be stored at 2°C-8°C for one month without detectable loss of activity. Antibody products are stable for twelve months from date of receipt when stored at -20°C to -80°C. Preservative-Free. Sodium azide is recommended to avoid contamination (final concentration 0.05%-0.1%). It is toxic to cells and should be disposed of properly. Avoid repeated freeze-thaw cycles.

APPLICATIONS

Applications:	ELISA, IHC-P
----------------------	--------------

RECOMMENDED CONCENTRATION

IHC-P	IHC-P: 1:10000-1:20000
ELISA	ELISA: 1:5000-1:10000 This antibody can be used at 1:5000-1:10000 with the appropriate secondary reagents to detect Mouse APLP1 / Amyloid-like protein 1.

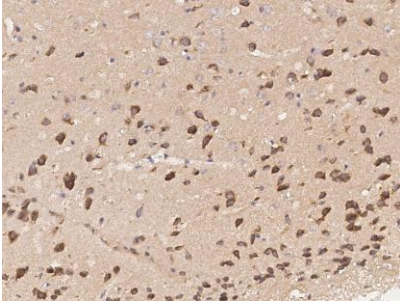
Please Note: Optimal concentrations/dilutions should be determined by the end user.

**APLP1 / Amyloid-like protein 1
Antibody, Rabbit PAb, Antigen
Affinity Purified**

Catalog Number: 51730-T24



Sino Biological
Biological Solution Specialist



Immunochemical staining of mouse APLP1 in mouse brain with rabbit polyclonal antibody (1:20000, formalin-fixed paraffin embedded sections).