



Catalog Number: 50023-R503

EliteRmab® is a registered trademark of Sino Biological Inc.

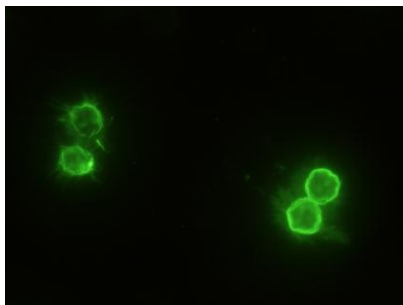
GENERAL INFORMATION	
<b>Immunogen:</b>	Recombinant Mouse CD14 protein (Catalog#50023-M08H)
<b>Preparation</b>	This antibody was obtained from a rabbit immunized with purified, recombinant Mouse CD14 (rM CD14; Catalog#50023-M08H; NP_033971.1; Met1-Pro345).
<b>Ig Type:</b>	Rabbit IgG
<b>Clone ID:</b>	503
<b>Specificity:</b>	Mouse CD14
<b>Formulation:</b>	0.2 µm filtered solution in PBS
<b>Storage:</b>	This antibody can be stored at 2°C-8°C for one month without detectable loss of activity. Antibody products are stable for twelve months from date of receipt when stored at -20°C to -80°C. Preservative-Free. Avoid repeated freeze-thaw cycles.
<b>Alternative Names:</b>	CD14
APPLICATIONS	
<b>Applications:</b>	FCM, ICC/IF
RECOMMENDED CONCENTRATION	
<b>ICC/IF</b>	ICC/IF: 1:20-1:100
<b>Flow Cytometry</b>	FCM: 1:25-1:100

**Please Note: Optimal concentrations/dilutions should be determined by the end user.**

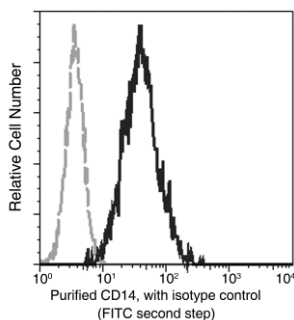


Catalog Number: 50023-R503

EliteRmab® is a registered trademark of Sino Biological Inc.



Immunofluorescence staining of Mouse CD14 in Mouse Spleen cells. Cells were fixed with 4% PFA, blocked with 10% serum, and incubated with rabbit anti-mouse CD14 monoclonal antibody (1:60) at 37°C 1 hour. Then cells were stained with the Alexa Fluor® 488-conjugated Goat Anti-rabbit IgG secondary antibody (green). Positive staining was localized to cell membrane.



Flow cytometric analysis of Mouse CD14 expression on Raw264.7 cells. Cells were stained with purified anti-Mouse CD14, then a FITC-conjugated second step antibody. The fluorescence histograms were derived from gated events with the forward and side light-scatter characteristics of intact cells.

Flow cytometry was performed on a BD FACSCalibur flow cytometry system. Please refer to [www.sinobiological.com/Flow-Cytometry-FACS-Protocols-a-750.html](http://www.sinobiological.com/Flow-Cytometry-FACS-Protocols-a-750.html) for technical protocols.