

TMEM194A / NEMP1 Antibody, Rabbit PAb, Antigen Affinity Purified



Sino Biological
Biological Solution Specialist

Catalog Number: 206749-T10

GENERAL INFORMATION

Immunogen:	E. coli-derived Human TMEM194A / NEMP1 fragment
Preparation	Produced in rabbits immunized with E. coli-derived Human TMEM194A / NEMP1 fragment, and purified by antigen affinity chromatography.
Ig Type:	Rabbit IgG
Specificity:	Human TMEM194A / NEMP1
Formulation:	PBS, pH7.0 with 0.03% Proclin300
Storage:	This antibody can be stored at 2°C-8°C for one month without detectable loss of activity. Antibody products are stable for twelve months from date of receipt when stored at -20°C to -80°C. Avoid repeated freeze-thaw cycles.
Alternative Names:	TMEM194A

APPLICATIONS

Applications:	IHC-P, ICC/IF
RECOMMENDED CONCENTRATION	
IHC-P	IHC-P: 1:50-1:200
ICC/IF	ICC/IF: 1:50-1:200

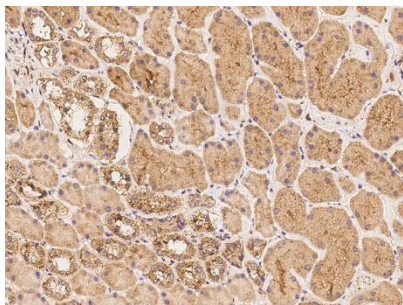
Please Note: Optimal concentrations/dilutions should be determined by the end user.

TMEM194A / NEMP1 Antibody, Rabbit PAb, Antigen Affinity Purified

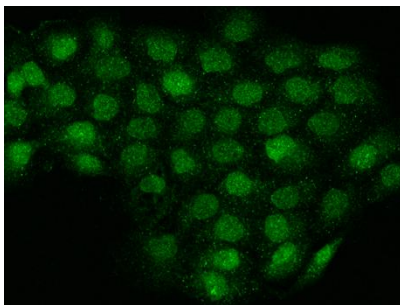


Sino Biological
Biological Solution Specialist

Catalog Number: 206749-T10



Immunochemical staining of human TMEM194A in human kidney with rabbit polyclonal antibody at 1:100 dilution, formalin-fixed paraffin embedded sections.



Immunofluorescence staining of TMEM194A in A431 cells. Cells were fixed with 4% PFA, permeabilized with 0.3% Triton X-100 in PBS, blocked with 10% serum, and incubated with rabbit anti-Human TMEM194A polyclonal antibody (dilution ratio 1:100) at 4°C overnight. Then cells were stained with the Alexa Fluor®488-conjugated Goat Anti-rabbit IgG secondary antibody (green). Positive staining was localized to Nucleus.