

# SPATA5L1 Antibody, Rabbit PAb, Antigen Affinity Purified



Sino Biological  
Biological Solution Specialist

Catalog Number: 205660-T02

## GENERAL INFORMATION

<b>Immunogen:</b>	E. coli-derived Human SPATA5L1 fragment
<b>Preparation</b>	Produced in rabbits immunized with E. coli-derived Human SPATA5L1 fragment, and purified by antigen affinity chromatography.
<b>Ig Type:</b>	Rabbit IgG
<b>Specificity:</b>	Human SPATA5L1
<b>Formulation:</b>	PBS, pH7.0 with 0.03% Proclin300
<b>Storage:</b>	This antibody can be stored at 2°C-8°C for one month without detectable loss of activity. Antibody products are stable for twelve months from date of receipt when stored at -20°C to -80°C. Preservative-Free. Avoid repeated freeze-thaw cycles.
<b>Alternative Names:</b>	SPATA5L1

## APPLICATIONS

<b>Applications:</b>	ICC/IF
----------------------	--------

## RECOMMENDED CONCENTRATION

<b>ICC/IF</b>	ICC/IF: 1:50-1:200
---------------	--------------------

***Please Note: Optimal concentrations/dilutions should be determined by the end user.***

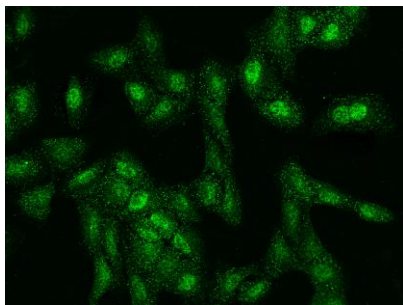
# SPATA5L1 Antibody, Rabbit PAb, Antigen Affinity Purified



Sino Biological  
Biological Solution Specialist

Catalog Number: 205660-T02

---



Immunofluorescence staining of SPATA5L1 in U2OS cells. Cells were fixed with 4% PFA, permeabilized with 0.1% Triton X-100 in PBS, blocked with 10% serum, and incubated with rabbit anti-Human SPATA5L1 polyclonal antibody (dilution ratio 1:100) at 4°C overnight. Then cells were stained with the Alexa Fluor®488-conjugated Goat Anti-rabbit IgG secondary antibody (green). Positive staining was localized to Nucleus and Cytoplasm.