

# PIK3C3 Antibody, Rabbit PAb, Antigen Affinity Purified



Sino Biological  
Biological Solution Specialist

Catalog Number: 204382-T42

## GENERAL INFORMATION

<b>Immunogen:</b>	E. coli-derived Human PIK3C3 fragment
<b>Preparation</b>	Produced in rabbits immunized with E. coli-derived Human PIK3C3 fragment, and purified by antigen affinity chromatography.
<b>Ig Type:</b>	Rabbit IgG
<b>Specificity:</b>	Human PIK3C3
<b>Formulation:</b>	PBS, pH7.0 with 0.03% Proclin300
<b>Storage:</b>	This antibody can be stored at 2°C-8°C for one month without detectable loss of activity. Antibody products are stable for twelve months from date of receipt when stored at -20°C to -80°C. Avoid repeated freeze-thaw cycles.
<b>Alternative Names:</b>	PIK3C3

## APPLICATIONS

<b>Applications:</b>	WB, IHC-P, ICC/IF
----------------------	-------------------

## RECOMMENDED CONCENTRATION

<b>IHC-P</b>	IHC-P: 1:250-1:1000
<b>ICC/IF</b>	ICC/IF: 1:500-1:2500
<b>Western Blot</b>	WB: 1:500-1:1000

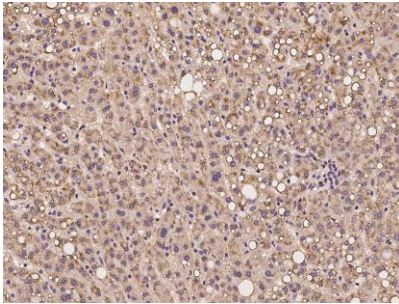
*Please Note: Optimal concentrations/dilutions should be determined by the end user.*

# PIK3C3 Antibody, Rabbit PAb, Antigen Affinity Purified

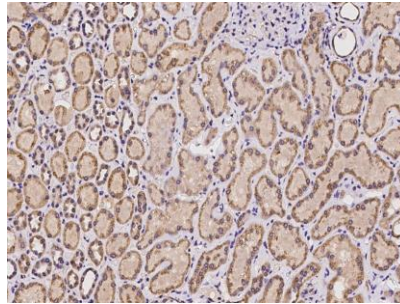


Sino Biological  
Biological Solution Specialist

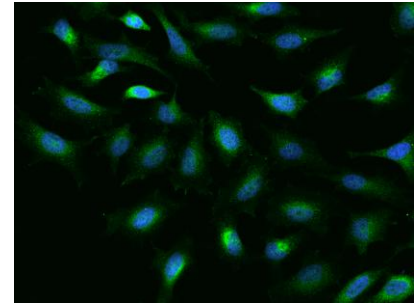
Catalog Number: 204382-T42



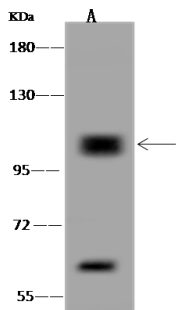
Immunohistochemical staining of human PIK3C3 in human liver with rabbit polyclonal antibody at 1:500 dilution, formalin-fixed paraffin embedded sections.



Immunohistochemical staining of human PIK3C3 in human kidney with rabbit polyclonal antibody at 1:500 dilution, formalin-fixed paraffin embedded sections.



Immunofluorescence staining of PIK3C3 in HeLa cells. Cells were fixed with 4% PFA, permeabilized with 0.1% Triton X-100 in PBS, blocked with 10% serum, and incubated with rabbit anti-Human PIK3C3 polyclonal antibody (dilution ratio 1:1000) at 4°C overnight. Then cells were stained with the Alexa Fluor®488-conjugated Goat Anti-rabbit IgG secondary antibody (green) and counterstained with DAPI (blue). Positive staining was localized to Cytoplasm.



Anti-PIK3C3 rabbit polyclonal antibody at 1:500 dilution  
Lane A: HeLa Whole Cell Lysate

Lysates/proteins at 30 µg per lane.  
Secondary  
Goat Anti-Rabbit IgG (H+L)/HRP at 1/10000 dilution.

Developed using the ECL technique.  
Performed under reducing conditions.

Predicted band size: 103 kDa  
Observed band size: 103 kDa  
(We are unsure as to the identity of these extra bands.)