

# SLC5A1 Antibody, Rabbit PAb, Antigen Affinity Purified



Sino Biological  
Biological Solution Specialist

Catalog Number: 203956-T08

## GENERAL INFORMATION

<b>Immunogen:</b>	E. coli-derived Human SLC5A1 fragment
<b>Preparation</b>	Produced in rabbits immunized with E. coli-derived Human SLC5A1 fragment, and purified by antigen affinity chromatography.
<b>Ig Type:</b>	Rabbit IgG
<b>Specificity:</b>	Human SLC5A1
<b>Formulation:</b>	PBS, pH7.0 with 0.03% Proclin300
<b>Storage:</b>	This antibody can be stored at 2°C-8°C for one month without detectable loss of activity. Antibody products are stable for twelve months from date of receipt when stored at -20°C to -80°C. Avoid repeated freeze-thaw cycles.

## APPLICATIONS

**Applications:** IHC-P

## RECOMMENDED CONCENTRATION

**IHC-P** IHC-P: 1:500-1:5000

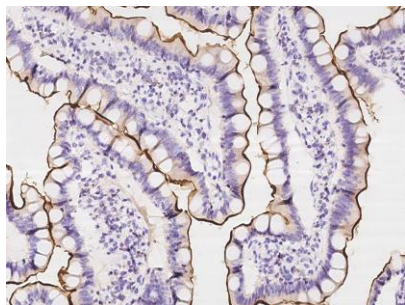
*Please Note: Optimal concentrations/dilutions should be determined by the end user.*

# SLC5A1 Antibody, Rabbit PAb, Antigen Affinity Purified

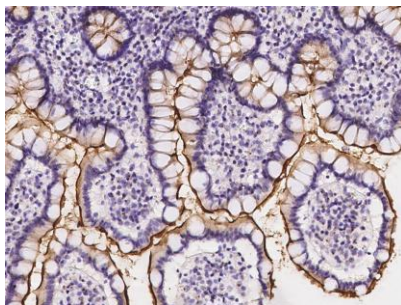


Sino Biological  
Biological Solution Specialist

Catalog Number: 203956-T08



Immunohistochemical staining of human SLC5A1 in human duodenum with rabbit polyclonal antibody at 1:2000 dilution, formalin-fixed paraffin embedded sections.



Immunohistochemical staining of human SLC5A1 in human small intestine with rabbit polyclonal antibody at 1:2000 dilution, formalin-fixed paraffin embedded sections.