

# PPID Antibody, Rabbit PAb, Antigen Affinity Purified



Sino Biological  
Biological Solution Specialist

Catalog Number: 202990-T44

## GENERAL INFORMATION

|                     |   |
|---------------------|---|
| <b>Immunogen:</b>   | E. coli-derived Human PPID fragment   |
| <b>Preparation</b>  | Produced in rabbits immunized with E. coli-derived Human PPID fragment, and purified by antigen affinity chromatography.  |
| <b>Ig Type:</b>     | Rabbit IgG  |
| <b>Specificity:</b> | Human PPID  |
| <b>Formulation:</b> | PBS, pH7.0 with 0.03% Proclin300  |
| <b>Storage:</b>     | This antibody can be stored at 2°C-8°C for one month without detectable loss of activity. Antibody products are stable for twelve months from date of receipt when stored at -20°C to -80°C. Avoid repeated freeze-thaw cycles. |

## APPLICATIONS

|                      |               |
|----------------------|---------------|
| <b>Applications:</b> | WB, IHC-P, IP |
|----------------------|---------------|

## RECOMMENDED CONCENTRATION

|                            |                       |
|----------------------------|-----------------------|
| <b>IHC-P</b>               | IHC-P: 1:50-1:200     |
| <b>Western Blot</b>        | WB: 1:500-1:2000      |
| <b>Immunoprecipitation</b> | IP:1-5µL/mg of lysate |

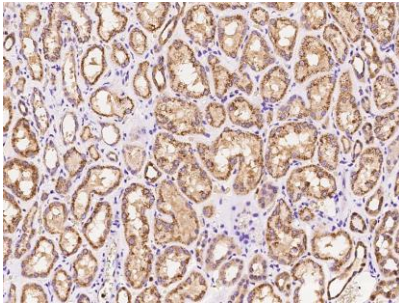
**Please Note: Optimal concentrations/dilutions should be determined by the end user.**

# PPID Antibody, Rabbit PAb, Antigen Affinity Purified

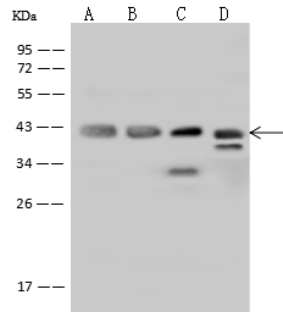


Sino Biological  
Biological Solution Specialist

Catalog Number: 202990-T44



Immunohistochemical staining of human PPID in human kidney with rabbit polyclonal antibody at 1:100 dilution, formalin-fixed paraffin embedded sections.

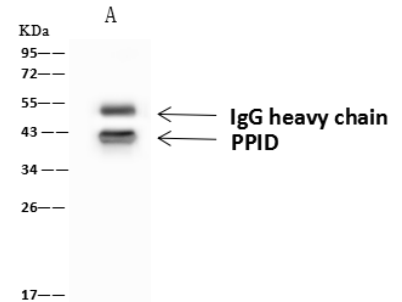


Anti-PPID rabbit polyclonal antibody at 1:500 dilution  
Lane A: K562 Whole Cell Lysate  
Lane B: HepG2 Whole Cell Lysate  
Lane C: Jurkat Whole Cell Lysate  
Lane D: Raji Whole Cell Lysate

Lysates/proteins at 30 µg per lane.  
Secondary  
Goat Anti-Rabbit IgG (H+L)/HRP at 1/10000 dilution.

Developed using the ECL technique.  
Performed under reducing conditions.

Predicted band size: 41 kDa  
Observed band size: 41 kDa  
(We are unsure as to the identity of these extra bands.)



PPID was immunoprecipitated using:  
Lane A: 0.5 mg K562 Whole Cell Lysate

4 µL anti-PPID rabbit polyclonal antibody and  
60 µg of Immunomagnetic beads Protein A/G.

Primary antibody:  
Anti-PPID rabbit polyclonal antibody, at 1:100 dilution

Secondary antibody:  
Goat Anti-Rabbit IgG (H+L)/HRP at 1/10000 dilution

Developed using the ECL technique.  
Performed under reducing conditions.

Predicted band size: 41 kDa  
Observed band size: 43 kDa