

XIAP Antibody, Rabbit PAb, Antigen Affinity Purified



Sino Biological
Biological Solution Specialist

Catalog Number: 201477-T36

GENERAL INFORMATION

Immunogen:	E. coli-derived Human XIAP fragment
Preparation	Produced in rabbits immunized with E. coli-derived Human XIAP fragment, and purified by antigen affinity chromatography.
Ig Type:	Rabbit IgG
Specificity:	Human XIAP
Formulation:	PBS, pH7.0 with 0.03% Proclin300
Storage:	This antibody can be stored at 2°C-8°C for one month without detectable loss of activity. Antibody products are stable for twelve months from date of receipt when stored at -20°C to -80°C. Avoid repeated freeze-thaw cycles.
Alternative Names:	XIAP

APPLICATIONS

Applications:	WB, IP
----------------------	--------

RECOMMENDED CONCENTRATION

Western Blot	WB: 1:500-1:2000
Immunoprecipitation	IP:1-5µL/mg of lysate

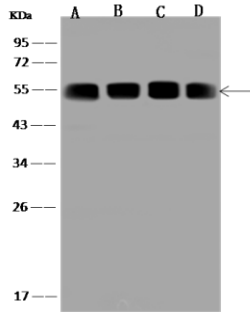
Please Note: Optimal concentrations/dilutions should be determined by the end user.

XIAP Antibody, Rabbit PAb, Antigen Affinity Purified



Sino Biological
Biological Solution Specialist

Catalog Number: 201477-T36



Anti-XIAP rabbit polyclonal antibody at 1:500 dilution

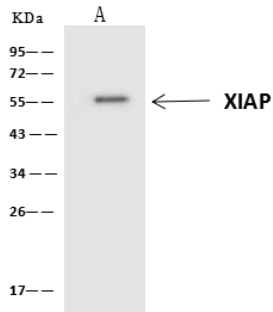
Lane A: HeLa Whole Cell Lysate
Lane B: A549 Whole Cell Lysate
Lane C: HEK293 Whole Cell Lysate
Lane D: HepG2 Whole Cell Lysate

Lysates/proteins at 30 µg per lane.
Secondary

Goat Anti-Rabbit IgG (H+L)/HRP at 1/10000 dilution.

Developed using the ECL technique.
Performed under reducing conditions.

Predicted band size: 57 kDa
Observed band size: 55 kDa



XIAP was immunoprecipitated using:
Lane A: 0.5 mg HepG2 Whole Cell Lysate

4 µL anti-XIAP rabbit polyclonal antibody and
60 µg of Immunomagnetic beads Protein A/G.

Primary antibody:

Anti-XIAP rabbit polyclonal antibody, at 1:100 dilution

Secondary antibody:

Clean-Blot IP Detection Reagent (HRP) at
1:1000 dilution

Developed using the ECL technique.
Performed under reducing conditions.

Predicted band size: 57 kDa
Observed band size: 55 kDa

For Research Use Only. Not for use in diagnostic or therapeutic procedures.

Tel: +86-400-890-9989 (Global), +1-215-583-7898 (USA), +49(0)6196 9678656 (Europe)

Website: <http://www.sinobiological.com>