

C3orf38 Antibody, Rabbit PAb, Antigen Affinity Purified



Sino Biological
Biological Solution Specialist

Catalog Number: 201311-T44

GENERAL INFORMATION

Immunogen:	E. coli-derived Human C3orf38 fragment
Preparation	Produced in rabbits immunized with E. coli-derived Human C3orf38 fragment, and purified by antigen affinity chromatography.
Ig Type:	Rabbit IgG
Specificity:	Human C3orf38
Formulation:	PBS, pH7.0 with 0.03% Proclin300
Storage:	This antibody can be stored at 2°C-8°C for one month without detectable loss of activity. Antibody products are stable for twelve months from date of receipt when stored at -20°C to -80°C. Avoid repeated freeze-thaw cycles.
Alternative Names:	C3orf38

APPLICATIONS

Applications:	WB, IHC-P, IP
RECOMMENDED CONCENTRATION	
IHC-P	IHC-P: 1:50-1:200
Western Blot	WB: 1:500-1:2000
Immunoprecipitation	IP:1-5µL/mg of lysate

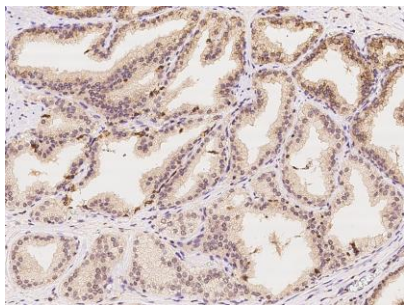
Please Note: Optimal concentrations/dilutions should be determined by the end user.

C3orf38 Antibody, Rabbit PAb, Antigen Affinity Purified

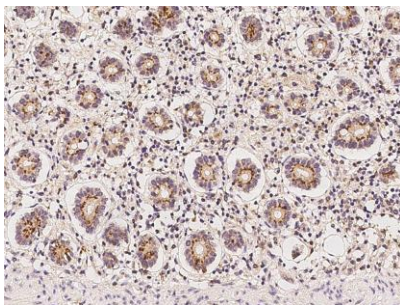


Sino Biological
Biological Solution Specialist

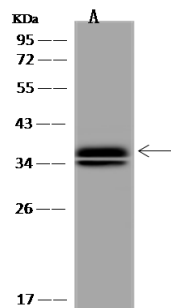
Catalog Number: 201311-T44



Immunohistochemical staining of human C3orf38 in human prostate with rabbit polyclonal antibody at 1:100 dilution, formalin-fixed paraffin embedded sections.



Immunohistochemical staining of human C3orf38 in human small intestine with rabbit polyclonal antibody at 1:100 dilution, formalin-fixed paraffin embedded sections.

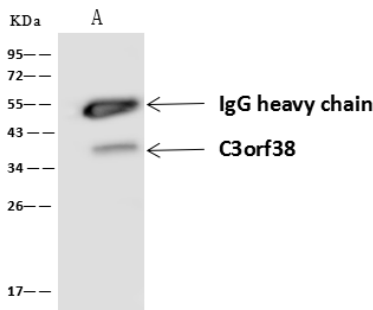


Anti-C3orf38 rabbit polyclonal antibody at 1:500 dilution
Lane A: U-251MG Whole Cell Lysate

Lysates/proteins at 30 µg per lane.
Secondary
Goat Anti-Rabbit IgG (H+L)/HRP at 1/10000 dilution.

Developed using the ECL technique.
Performed under reducing conditions.

Predicted band size: 37 kDa
Observed band size: 37 kDa



C3orf38 was immunoprecipitated using:
Lane A: 0.5 mg U-251MG Whole Cell Lysate

4 µL anti-C3orf38 rabbit polyclonal antibody
and 60 µg of Immunomagnetic beads Protein A/G.

Primary antibody:
Anti-C3orf38 rabbit polyclonal antibody, at
1:100 dilution

Secondary antibody:
Goat Anti-Rabbit IgG (H+L)/HRP at 1/10000
dilution

Developed using the ECL technique.
Performed under reducing conditions.

Predicted band size: 37 kDa
Observed band size: 37 kDa