

MESDC2 Antibody, Rabbit PAb, Antigen Affinity Purified



Sino Biological
Biological Solution Specialist

Catalog Number: 201201-T36

GENERAL INFORMATION

Immunogen:	E. coli-derived Human MESDC2 fragment
Preparation	Produced in rabbits immunized with E. coli-derived Human MESDC2 fragment, and purified by antigen affinity chromatography.
Ig Type:	Rabbit IgG
Specificity:	Human MESDC2
Formulation:	PBS, pH7.0 with 0.03% Proclin300
Storage:	This antibody can be stored at 2°C-8°C for one month without detectable loss of activity. Antibody products are stable for twelve months from date of receipt when stored at -20°C to -80°C. Avoid repeated freeze-thaw cycles.
Alternative Names:	MESD

APPLICATIONS

Applications:	WB, IP
RECOMMENDED CONCENTRATION	
Western Blot	WB: 1:500-1:2000
Immunoprecipitation	IP:1-5µL/mg of lysate

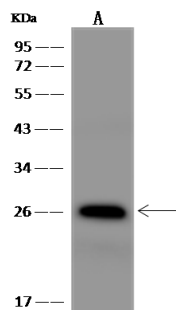
Please Note: Optimal concentrations/dilutions should be determined by the end user.

MESDC2 Antibody, Rabbit PAb, Antigen Affinity Purified



Sino Biological
Biological Solution Specialist

Catalog Number: 201201-T36

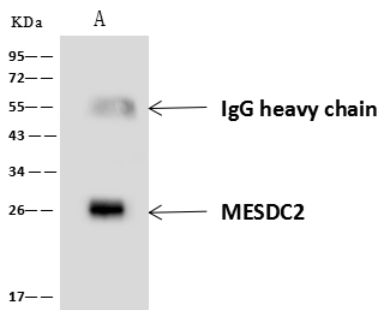


Anti-MESDC2 rabbit polyclonal antibody at
1:500 dilution
Lane A: HeLa Whole Cell Lysate

Lysates/proteins at 30 µg per lane.
Secondary
Goat Anti-Rabbit IgG (H+L)/HRP at 1/10000
dilution.

Developed using the ECL technique.
Performed under reducing conditions.

Predicted band size:26 kDa
Observed band size:26 kDa



MESDC2 was immunoprecipitated using:
Lane A:0.5 mg HeLa Whole Cell Lysate

4 µL anti-MESDC2 rabbit polyclonal antibody
and 60 µg of Immunomagnetic beads Protein
A/G.

Primary antibody:
Anti-MESDC2 rabbit polyclonal antibody,at
1:100 dilution

Secondary antibody:
Goat Anti-Rabbit IgG (H+L)/HRP at 1/10000
dilution

Developed using the ECL technique.
Performed under reducing conditions.

Predicted band size: 28 kDa
Observed band size :26 kDa