

# EIF4A3 Antibody, Rabbit PAb, Antigen Affinity Purified



Sino Biological  
Biological Solution Specialist

Catalog Number: 200323-T36

## GENERAL INFORMATION

<b>Immunogen:</b>	E. coli-derived Human EIF4A3 fragment
<b>Preparation</b>	Produced in rabbits immunized with E. coli-derived Human EIF4A3 fragment, and purified by antigen affinity chromatography.
<b>Ig Type:</b>	Rabbit IgG
<b>Specificity:</b>	Human EIF4A3
<b>Formulation:</b>	PBS, pH7.0 with 0.03% Proclin300
<b>Storage:</b>	This antibody can be stored at 2°C-8°C for one month without detectable loss of activity. Antibody products are stable for twelve months from date of receipt when stored at -20°C to -80°C. Avoid repeated freeze-thaw cycles.
<b>Alternative Names:</b>	EIF4A3

## APPLICATIONS

<b>Applications:</b>	WB, IP
<b>RECOMMENDED CONCENTRATION</b>	
<b>Western Blot</b>	WB: 1:500-1:2000
<b>Immunoprecipitation</b>	IP:1-5µL/mg of lysate

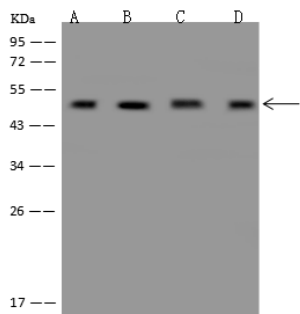
*Please Note: Optimal concentrations/dilutions should be determined by the end user.*

# EIF4A3 Antibody, Rabbit PAb, Antigen Affinity Purified



Sino Biological  
Biological Solution Specialist

Catalog Number: 200323-T36



Anti-EIF4A3 rabbit polyclonal antibody at 1:500 dilution

Lane A: HeLa Whole Cell Lysate  
Lane B: MCF7 Whole Cell Lysate  
Lane C: Raji Whole Cell Lysate  
Lane D: HepG2 Whole Cell Lysate

Lysates/proteins at 30 µg per lane.

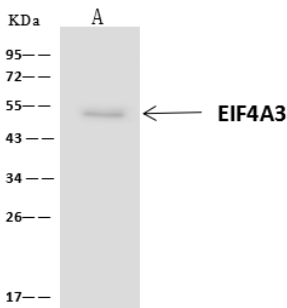
Secondary

Goat Anti-Rabbit IgG (H+L)/HRP at 1/10000 dilution.

Developed using the ECL technique.  
Performed under reducing conditions.

Predicted band size: 47 kDa

Observed band size: 47 kDa



EIF4A3 was immunoprecipitated using:

Lane A: 0.5 mg HepG2 Whole Cell Lysate

4 µL anti-EIF4A3 rabbit polyclonal antibody  
and 60 µg of Immunomagnetic beads Protein A/G.

Primary antibody:

Anti-EIF4A3 rabbit polyclonal antibody, at 1:100 dilution

Secondary antibody:

Clean-Blot IP Detection Reagent (HRP) at 1:1000 dilution

Developed using the ECL technique.

Performed under reducing conditions.

Predicted band size: 47 kDa

Observed band size: 50 kDa

For Research Use Only. Not for use in diagnostic or therapeutic procedures.

Tel: +86-400-890-9989 (Global), +1-215-583-7898 (USA), +49(0)6196 9678656 (Europe)

Website: <http://www.sinobiological.com>