

# PSMA5 Antibody, Rabbit PAb, Antigen Affinity Purified



Sino Biological  
Biological Solution Specialist

Catalog Number: 200015-T44

## GENERAL INFORMATION

<b>Immunogen:</b>	E. coli-derived Human PSMA5 fragment
<b>Preparation</b>	Produced in rabbits immunized with E. coli-derived Human PSMA5 fragment, and purified by antigen affinity chromatography.
<b>Ig Type:</b>	Rabbit IgG
<b>Specificity:</b>	Human PSMA5
<b>Formulation:</b>	0.2 µm filtered solution in PBS
<b>Storage:</b>	This antibody can be stored at 2°C-8°C for one month without detectable loss of activity. Antibody products are stable for twelve months from date of receipt when stored at -20°C to -80°C. Preservative-Free. Sodium azide is recommended to avoid contamination (final concentration 0.05%-0.1%). It is toxic to cells and should be disposed of properly. Avoid repeated freeze-thaw cycles.

## APPLICATIONS

<b>Applications:</b>	WB,IHC-P,IP
----------------------	-------------

## RECOMMENDED CONCENTRATION

<b>IHC-P</b>	IHC-P: 1:10000-1:25000
<b>Western Blot</b>	WB: 1:500-1:1000
<b>Immunoprecipitation</b>	IP: 0.2-1 µL/mg of lysate

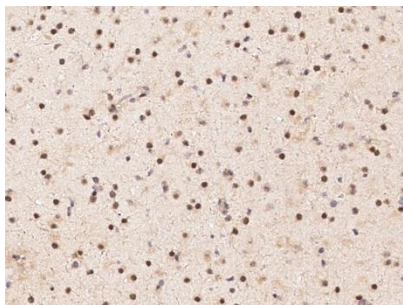
**Please Note: Optimal concentrations/dilutions should be determined by the end user.**

# PSMA5 Antibody, Rabbit PAb, Antigen Affinity Purified

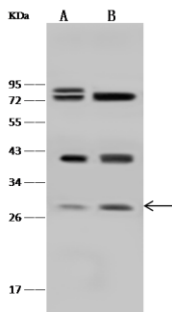


Sino Biological  
Biological Solution Specialist

Catalog Number: 200015-T44



Immunohistochemical staining of human PSMA5 in human brain with rabbit polyclonal antibody at 1:15000 dilution, formalin-fixed paraffin embedded sections.

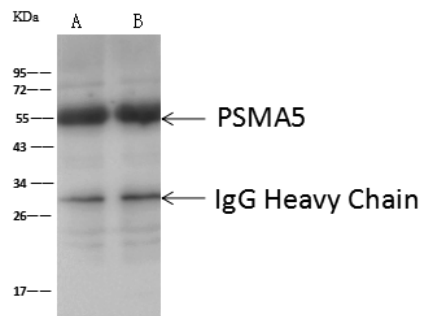


Anti-PSMA5 rabbit polyclonal antibody at 1:500 dilution  
Lane A: HepG2 Whole Cell Lysate  
Lane B: HeLa Whole Cell Lysate

Lysates/proteins at 30  $\mu$ g per lane.  
Secondary  
Goat Anti-Rabbit IgG (H+L)/HRP at 1/10000 dilution.

Developed using the ECL technique.  
Performed under reducing conditions.

Predicted band size: 26 kDa  
Observed band size: 26 kDa



PSMA5 was immunoprecipitated using:  
Lane A: 0.5 mg 293T Whole Cell Lysate  
Lane B: 0.5 mg MCF7 Whole Cell Lysate

1  $\mu$ L anti-PSMA5 rabbit polyclonal antibody and 60  $\mu$ g of Immunomagnetic beads Protein A/G.

Primary antibody:  
Anti-PSMA5 rabbit polyclonal antibody, at 1:500 dilution

Secondary antibody:  
Goat Anti-Rabbit IgG (H+L)/HRP at 1/10000 dilution

Developed using the ECL technique.  
Performed under reducing conditions.

Predicted band size: 26 kDa  
Observed band size: 28 kDa