

Growth Hormone/GH1 Antibody, Mouse MAb



Sino Biological
Biological Solution Specialist

Catalog Number: 16122-MM85

GENERAL INFORMATION

Immunogen:	Recombinant Human Growth Hormone/GH1 Protein (Catalog#16122-H07E)
Preparation	This antibody was produced from a hybridoma resulting from the fusion of a mouse myeloma with B cells obtained from a mouse immunized with purified, recombinant Human Growth Hormone/GH1 (rh Growth Hormone/GH1; Catalog#16122-H07E; P01241; Phe27-Phe217). The IgG fraction of the cell culture supernatant was purified by Protein A affinity chromatography.
Ig Type:	Mouse IgG1
Clone ID:	85
Specificity:	Human Growth Hormone/GH1
Formulation:	0.2 µm filtered solution in PBS
Storage:	This antibody can be stored at 2°C-8°C for one month without detectable loss of activity. Antibody products are stable for twelve months from date of receipt when stored at -20°C to -80°C. Preservative-Free. Sodium azide is recommended to avoid contamination (final concentration 0.05%-0.1%). It is toxic to cells and should be disposed of properly. Avoid repeated freeze-thaw cycles.

APPLICATIONS

Applications:	IHC-P
----------------------	-------

RECOMMENDED CONCENTRATION

IHC-P	IHC-P: 1:30-1:100
--------------	-------------------

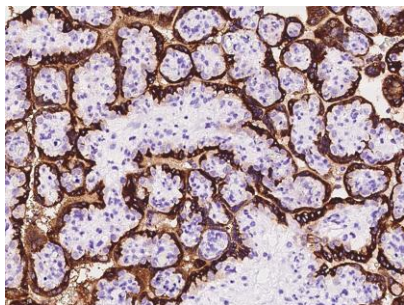
Please Note: Optimal concentrations/dilutions should be determined by the end user.

Growth Hormone/GH1 Antibody, Mouse MAb



Sino Biological
Biological Solution Specialist

Catalog Number: 16122-MM85



Immunochemical staining of human GH1 in human placenta with mouse monoclonal antibody at 1:60 dilution, formalin-fixed paraffin embedded sections.