

CRIP2 Antibody, Mouse MAb



Sino Biological
Biological Solution Specialist

Catalog Number: 14552-MM05

GENERAL INFORMATION

Immunogen:	Recombinant Human CRIP2 protein (Catalog#14552-H20B)
Preparation	This antibody was produced from a hybridoma resulting from the fusion of a mouse myeloma with B cells obtained from a mouse immunized with purified, recombinant Human CRIP2 (rh CRIP2; Catalog#14552-H20B; P52943; Met1-Pro208). The IgG fraction of the cell culture supernatant was purified by Protein A affinity chromatography.
Ig Type:	Mouse IgG1
Clone ID:	05
Specificity:	Human CRIP2
Formulation:	0.2 µm filtered solution in PBS
Storage:	This antibody can be stored at 2°C-8°C for one month without detectable loss of activity. Antibody products are stable for twelve months from date of receipt when stored at -20°C to -80°C. Preservative-Free. Avoid repeated freeze-thaw cycles.

APPLICATIONS

Applications:	IHC-P
----------------------	-------

RECOMMENDED CONCENTRATION

IHC-P	IHC-P: 1:50-1:200
--------------	-------------------

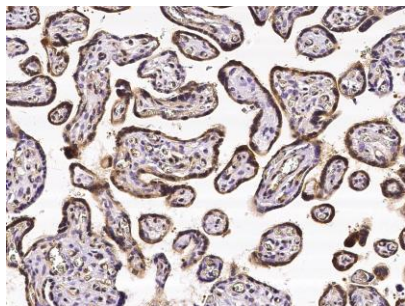
Please Note: Optimal concentrations/dilutions should be determined by the end user.

CRIP2 Antibody, Mouse MAb



Sino Biological
Biological Solution Specialist

Catalog Number: 14552-MM05



Immunohistochemical staining of human CRIP2 in human placenta with mouse monoclonal antibody (1:100, formalin-fixed paraffin embedded sections).