

PSGL-1 / CD162 / SELPLG Antibody (APC), Rabbit MAb



Catalog Number: 13863-R031-A

EliteRmab® is a registered trademark of Sino Biological Inc.

GENERAL INFORMATION	
Immunogen:	Recombinant Human PSGL-1 / CD162 / SELPLG Protein (Catalog#13863-H08H)
Reagents:	APC-conjugated Rabbit monoclonal antibody
Preparation	This antibody was obtained from a rabbit immunized with purified, recombinant Human PSGL-1 / CD162 / SELPLG (rh PSGL-1 / CD162 / SELPLG; Catalog#13863-H08H; Q14242; Met1-Gly295) and conjugated with APC under optimum conditions, the unreacted APC was removed.
Ig Type:	Rabbit IgG
Clone ID:	031
Specificity:	Human PSGL-1 / CD162 / SELPLG
Concentration:	10 µl/Test, 0.1 mg/ml
Formulation:	Aqueous solution containing 0.5% BSA and 0.09% sodium azide
Storage:	This antibody is stable for 12 months from date of receipt when stored at 2°C-8°C. Protected from prolonged exposure to light. Do not freeze! Sodium azide is toxic to cells and should be disposed of properly. Flush with large volumes of water during disposal.
APPLICATIONS	
Applications:	FCM
RECOMMENDED CONCENTRATION	

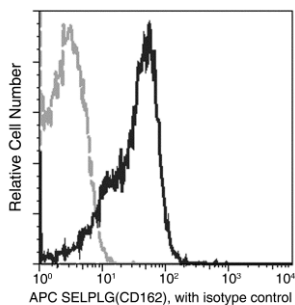
Please Note: Optimal concentrations/dilutions should be determined by the end user.

PSGL-1 / CD162 / SELPLG Antibody (APC), Rabbit MAb



Catalog Number: 13863-R031-A

EliteRmab® is a registered trademark of Sino Biological Inc.



Flow cytometric analysis of Human SELPLG(CD162) expression on human whole blood lymphocytes. Cells were stained with APC-conjugated anti-Human SELPLG(CD162). The fluorescence histograms were derived from gated events with the forward and side light-scatter characteristics of viable lymphocytes.

Flow cytometry was performed on a BD FACSCalibur flow cytometry system. Please refer to www.sinobiological.com/Flow-Cytometry-FACS-Protocols-a-750.html for technical protocols.