

Human PTH2 / PTRH2 Protein (His Tag)



Sino Biological
Biological Solution Specialist

Catalog Number: 13645-H07E

General Information

Gene Name Synonym:

BIT1; CFAP37; CGI-147; IMNEPD; PTH; PTH 2; PTH2; PTRH2

Protein Construction:

A DNA sequence encoding the human PTRH2 (Q9Y3E5) (Gly63-Tyr179) was expressed with a polyhistidine tag at the N-terminus.

Source: Human

Expression Host: E. coli

QC Testing

Purity: > 95 % as determined by SDS-PAGE

Endotoxin:

Please contact us for more information.

Stability:

Samples are stable for up to twelve months from date of receipt at -70 °C

Predicted N terminal: His

Molecular Mass:

The recombinant human PTRH2 consists of 132 amino acids and predicts a molecular mass of 14.5 KDa. It migrates as an approximately 14 KDa band in SDS-PAGE under reducing conditions.

Formulation:

Lyophilized from sterile 20mM Tris, 10% glycerol, pH 8.0.

Normally 5 % - 8 % trehalose, mannitol and 0.01% Tween80 are added as protectants before lyophilization. Specific concentrations are included in the hardcopy of COA. Please contact us for any concerns or special requirements.

Usage Guide

Storage:

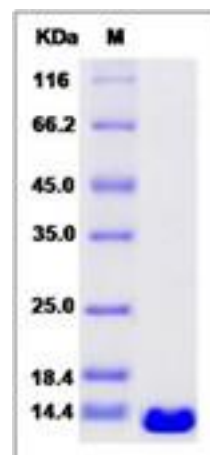
Store it under sterile conditions at -20°C to -80°C upon receiving. Recommend to aliquot the protein into smaller quantities for optimal storage.

Avoid repeated freeze-thaw cycles.

Reconstitution:

Detailed reconstitution instructions are sent along with the products.

SDS-PAGE:



Protein Description

PTH2, also known as PTRH2, is a mitochondrial protein which belongs to the PTH2 family. PTH 2 is released during apoptosis from the mitochondria to the cytoplasm. The natural substrate for PTH 2 may be peptidyl-tRNAs which drop off the ribosome during protein synthesis. When in the cytoplasm, PTRH2 regulates the function of 2 transcriptional regulators, TLE5 and TLE1, thus promoting caspase-independent cell death.

References

1.Prahalad AK. et al., 2006, Proteomics. 6 (12): 3482-93. 2.Jin L. et al., 2000, J Biol Chem. 275 (35): 27238-44. 3.Boone T. et al., 2000, Nat Struct Biol. 7 (6): 486-91.

Manufactured By Sino Biological Inc., FOR RESEARCH USE ONLY. NOT FOR USE IN HUMANS.

For US Customer: Fax: 267-657-0217

• Tel: 215-583-7898

Global Customer: Fax :+86-10-5862-8288

• Tel:+86-400-890-9989

• <http://www.sinobiological.com>