



Catalog Number: 12635-R207

EliteRmab® is a registered trademark of Sino Biological Inc.

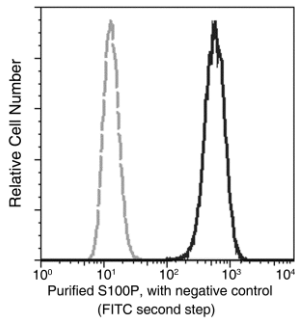
GENERAL INFORMATION	
Immunogen:	Recombinant Human S100P Protein (Catalog#12635-HNAE)
Preparation	This antibody was obtained from a rabbit immunized with purified, recombinant Human S100P (rh S100P; Catalog#12635-HNAE; P25815; Met1-Lys95).
Ig Type:	Rabbit IgG
Clone ID:	207
Specificity:	Human S100P
Formulation:	0.2 µm filtered solution in PBS
Storage:	This antibody can be stored at 2°C-8°C for one month without detectable loss of activity. Antibody products are stable for twelve months from date of receipt when stored at -20°C to -80°C. Preservative-Free. Sodium azide is recommended to avoid contamination (final concentration 0.05%-0.1%). It is toxic to cells and should be disposed of properly. Avoid repeated freeze-thaw cycles.
APPLICATIONS	
Applications:	FCM
RECOMMENDED CONCENTRATION	
Flow Cytometry	FCM: 1:25-1:100

Please Note: Optimal concentrations/dilutions should be determined by the end user.



Catalog Number: 12635-R207

EliteRmab® is a registered trademark of Sino Biological Inc.



Flow cytometric analysis of Human S100P expression on HeLa cells. The cells were treated according to manufacturer's manual (BD Pharmingen™ Cat. No. 554714), stained with purified anti-Human S100P, then a FITC-conjugated second step antibody. The fluorescence histograms were derived from gated events with the forward and side light-scatter characteristics of intact cells.

Flow cytometry was performed on a BD FACSCalibur flow cytometry system. Please refer to www.sinobiological.com/Flow-Cytometry-FACS-Protocols-a-750.html for technical protocols.